

APEX ISFL Horizontal end-suction pumps to ISO 2858 dimensions

FEATURES

- ◆ Dimensions to DIN 2858
- ◆ Complies to ATEX Directive 2014/34/EU
- ◆ Engineered bedplate design

BENEFITS

- ◆ Comprehensive range with 29 sizes
- ◆ Impellers trimmed to contract duty
- ◆ Supplied bareshaft or with IE3 motors for energy saving
- ◆ Back pull out design for ease of maintenance
- ◆ Extended bearing life from a single roller and double angular contact bearings

OPERATING RANGE

- ◆ Maximum flow rates up to 900 m³/hr
- ◆ Maximum generated head 160m at 2900 rpm
- ◆ Discharge flange sizes 32mm – 200mm
- ◆ Flange ratings
BS4504 PN16, BS4504 PN25, BS4504 PN40,
ANSI 150RF or 300RF

APPLICATIONS

- Cooling water circulation
- Water supply and boosting
- Heating and air conditioning
- Oils, solvents and hydrocarbons
- Industrial liquids chemicals
- Fuel loading, transfer and distribution
- Electrophoretic paint
- Seawater service
- Starch and sugar production

WORKING PRESSURE

Cast iron pumps are capable of a working pressure of 16 bar.

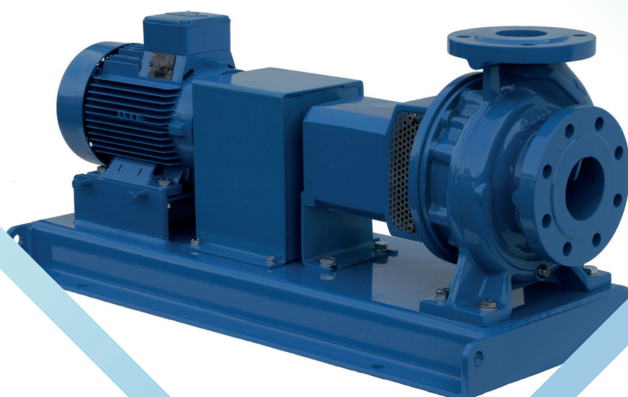
With higher rated flanges, cast steel and stainless steel pumps can be supplied for higher working pressures. All pumps are hydrostatically tested to 1.5 times the rated working pressure.

MECHANICAL SEAL

Virtually any make and type of single, double or cartridge mechanical seal may be fitted.

SPARE PARTS

All ISFL pumps are fully supported by a generous inventory of spare parts available from stock. Contact the dedicated spares team spares@apexpumps.com



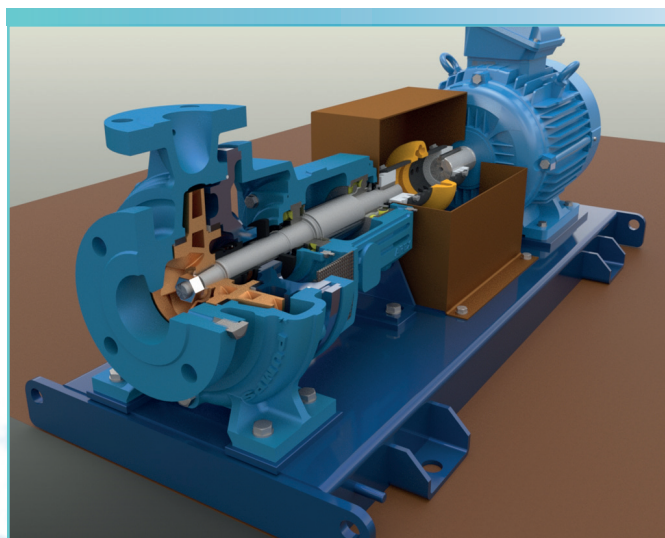
PolyPump Ltd

Providing your pumping solutions
sales@polypump.co.uk
01296 488 294

MATERIALS

Castings in a variety of materials are produced in the company's own ISO 9001 foundry in Bristol, using the Replicast® method. Castings can meet NORSOK and NACE MR0103 standards where required.

Cast Iron	BS-1561:2011
Stainless Steel	ASTM A351 CF8M, CF3M, CF8, CF3
Duplex stainless steel	ASTM A890 Grade 1B
Super duplex stainless steel	ASTM A890 Grade 5A
Cast steel	ASTM A216 Grade WCB
Titanium	ASTM B367 Grade 2
Hastalloy C	ASTM A494 Grade CW-12MW
Cast bronze	BS1400 grade LG2
Other grades available on request.	



APEXPUMPS
CENTRIFUGAL PUMP MANUFACTURERS

For further information on any APEX product,
please contact the APEX sales office:
tel: 0117 9077555
enquiries@apexpumps.com

APEX FLUID ENGINEERING LTD
MORLEY ROAD, STAPLE HILL
BRISTOL, BS16 4QT

APEX ISFL Range Charts 50hz

