

Customer	Date	11/5/2020
Contact	Project	
Phone number	Project no.	
Email		

## LNTEH40-125/22/P25RCS4/2

### Operating data

Pump type	Twin head pump	Fluid	Water, pure
No. of pumps / Reserve	1 / 0	Operating temperature t A	°C 4
Nominal flow	m <sup>3</sup> /h 0	pH-value at t A	7
Nominal head	m 0	Density at t A	kg/m <sup>3</sup> 1000
Static head	m 0	Kin. viscosity at t A	mm <sup>2</sup> /s 1.569
Inlet pressure	kPa 0	Vapor pressure at t A	kPa 100
Environmental temperature	°C 20	Solids	0
Available system NPSH	m 0	Altitude	m 0

### Pump data

Make	Lowara	Nominal	m <sup>3</sup> /h ( )
Speed	rpm 2900	Flow Max-	m <sup>3</sup> /h 30.5
Number of stages	1	Min-	m <sup>3</sup> /h 8.8
Max. casing pressure	kPa	Nominal	m
Max. working pressure	kPa 223.8	Head at Qmax	m 12.9
Head H(Q=0)	m 23	at Qmin	m 23.3
Weight	kg	Shaft power	kW ( )
Max.	mm 145	Max. shaft power	kW 2.1
Impeller R designed	mm 133	Efficiency	%
Min.	mm 113	NPSH 3%	m
Suction nozzle	DN 40 PN 16 EN1092-2 (e-LNT)	Discharge nozzle	DN 40 PN 16 EN1092-2 (e-LNT)

### Pump Materials

Volute Casing	Cast Iron
Casing Cover	Cast Iron
Impeller	Stainless steel / AISI 304
Stub shaft	Stainless steel / AISI 316L
Wear Ring	Stainless steel / AISI 304
Impeller lock nut and washer	Stainless steel / AISI 304
Impeller key	Stainless steel / AISI 316L
Fill and draing plugs	Nickel-plated brass

### Shaft Seal

Unbalanced mechanical seal	
eMG12 (-25 / +90 °C)	Burgmann
1. Rotating ring	Carbon graphite resin impregnated
2. Stationary ring	SiC, silicon carbide, sintered press. less
3. Secondary seal	Ethylene propylene rubber (EPDM)
4. Springs	CrNiMo - Steel
5. Others	EPDM - WRAS
Gaskets of the pump	Ethylene propylene rubber (EPDM)
Code	B/ESIC-Q7EGG/Y 10-WA

### Motor data

Manufacturer	Lowara	Electric voltage	220 V
Specific design	IE3 Three phase surface motor		
Type	PLM90.../322 E3		
Rated power	2.2 kW	Electric current	7.97 A
Speed	2880 rpm	Degree of protection	IP 55
Frame size	90	Weight	18 kg
Shaft diameter	0 mm	Colour	RAL 5010
Insulation class	F		

### Coupling

Manufacturer	
Series	
Type	
Frame size	
Spacer length	
Weight	
Coupling protection	

### Base plate

Description	
Weight	

### Remarks:

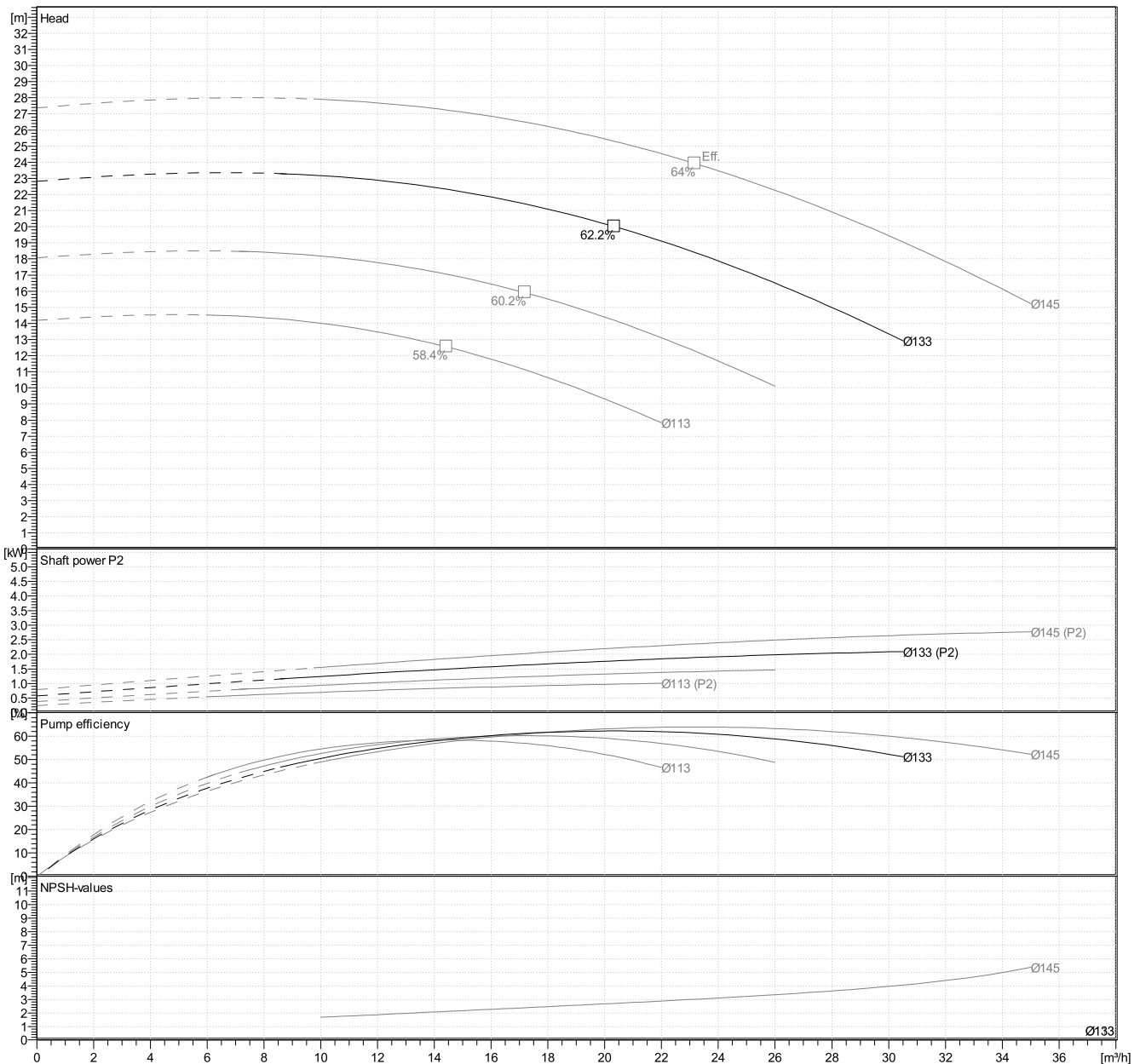
Customer	Date	11/5/2020
Contact	Project	
Phone number	Project no.	
Email		

## LNTEH40-125/22/P25RCS4/2

### Hydraulic data

Operating Data Specification		Hydraulic data (duty point)		Impeller design	
Flow	0 m <sup>3</sup> /h	Flow		Impeller R	133 mm
Head	0 m	Head		Frequency	50 Hz
Static head	0 m	MEI >=0,4		Speed	2900 rpm

Power data referred to:  
 Water, pure [100%] ; 4°C; 1000kg/m<sup>3</sup>; 1.57mm<sup>2</sup>/s  
 Performance according to ISO 9906:2012 – Grade 3B



Customer	Date	11/5/2020
Contact	Project	
Phone number	Project no.	
Email		

## LNTEH40-125/22/P25RCS4/2

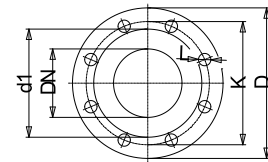
### Dimensions mm/l

B	549		
b1	274.5		
DND	40		
DNS	40		
H	320		
h1	180		
h2	52		
h3	110		
k	300		
L	668		
l1	100		
p	174		
x	310		
		Total weight	90.2 kg

### Connections mm

Suction nozzle	Discharge nozzle
DN 40	DN 40
PN 16	PN 16
EN1092-2 (e-LNT)	EN1092-2 (e-LNT)

C	18	C	18
D	150	D	150
df	84	df	84
DN	40	DN	40
K	110	K	110
L	4 x 19	L	4 x 19



Value C, D may vary from Standard

### Drawing

