

JUNG PUMPEN PLANCOFIX | PLANCOFIX PLUS

FLOOR DRAIN PUMPS

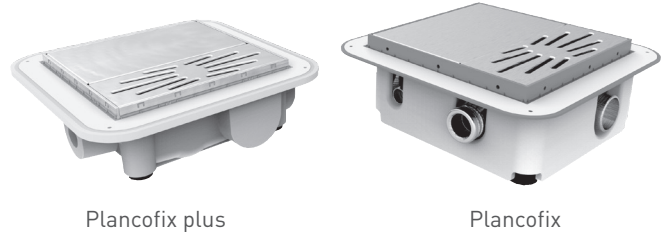
APPLICATION

Plancofix is a floor drainage pump that allows barrier-free or low entry showers to be fitted even where the lack of a gravity drain ruled out this option in the past.

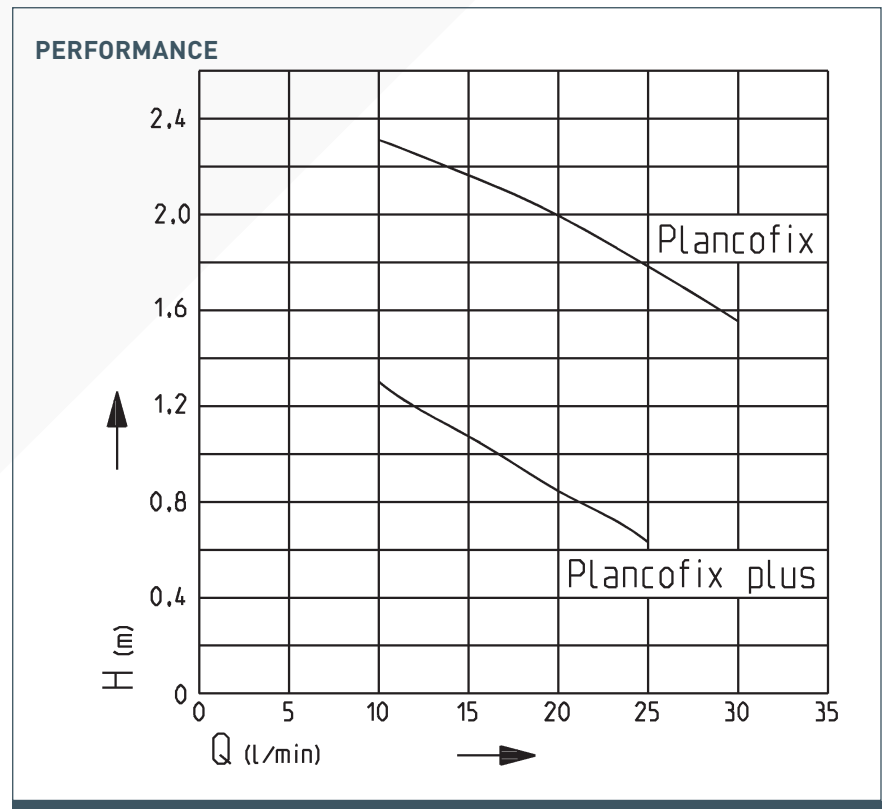
Set into the screed, the Plancofix forms the floor drain in tiled showers. The incoming water is pumped to the nearest downpipe through a 1 inch pressure pipe. The Plancofix is **not** a lifting station as defined by DIN EN 12050-2, but was specially built to drain showers. The inflow from the shower can enter either directly from above through the floor drain, or from the side through a connecting branch.

The **Plancofix plus** has a smaller motor which allows a lower installation depth of 8 cm or 9 cm incl. insulation tray.

It can be recommended in situations where a low delivery head is required.



- Installation depth 10.5 cm | 8 cm
- Inflow from above through the floor drain or from the side
- Sealling collar for attaching to the customer's thin-bed waterproofing system
- Easy cleaning and maintenance
- Drain can be tiled or in stainless steel
- Secondary drain as an option
- Plancofix plus < 30 dB(A)



We reserve the right to change specifications without notice

Pump performance is subject to ISO 9906 tolerances

JUNG PUMPEN PLANCOFIX | PLANCOFIX PLUS

FLOOR DRAIN PUMPS

FLOOR DRAINAGE PUMP

Type	Maximum height x width x depth	Cable type	Cable length	Weight approx.	Code no.
Plancofix	124 x 340 x 340 mm	H05VV-F-3G0,75 GR	5 m	3.7 kg	JP44685
Plancofix plus	103 x 352 x 352 mm	H05VV-F-3G0,75 GR	5 m	4,0 kg	JP47014

PERFORMANCE

Type	Delivery head H [m]	0.5	1	1.5	2
Plancofix	Flow rate Q [l/min]			31	20
Plancofix plus		26	16		

ELECTRICAL DATA

Type	Type of current	Voltage Volt	Motor rating W P ₁	Current Ampere	Motor protection	Plug
Plancofix	1-phase	1/N/PE~230	65	0.44	in the winding	without
Plancofix plus	W-Strom	1/N/PE~230	30	0,20	in the winding	without

TECHNICAL DATA

Design

This unit has a powerful synchronous motor with a blockage-free hydraulic system. There is a built-in swing-type check valve in the pressure outlet (1 inch). The hydraulic system is designed for tool-free disconnection from the motor for maintenance and cleaning purposes. Besides the inlet at the top, there is also the option of using a DN 50 side inlet. The tank is installed together with the insulating tray to minimise noise.

Pump

Horizontal single-phase pump with maintenance-free synchronous motor. Winding thermostat for emergency switch-off, automatic switch-on via integrated level control.

Material

The tank itself is made of high-strength plastic, and the cover and screws are in stainless steel.

Seal

The internal seals are made of NBR, and

a sealing membrane made of PP-laminated PE is used to create a seal between the unit and the floor (included in supply package). The sealing membrane can be connected to the structural waterproofing system using commercial sealing materials.

Supply package

Ready to connect unit with tileable floor drain, insulating tray, height adjustment feet and ready-prepared for connection to a sealing membrane.

