

## Pressure control FPPU

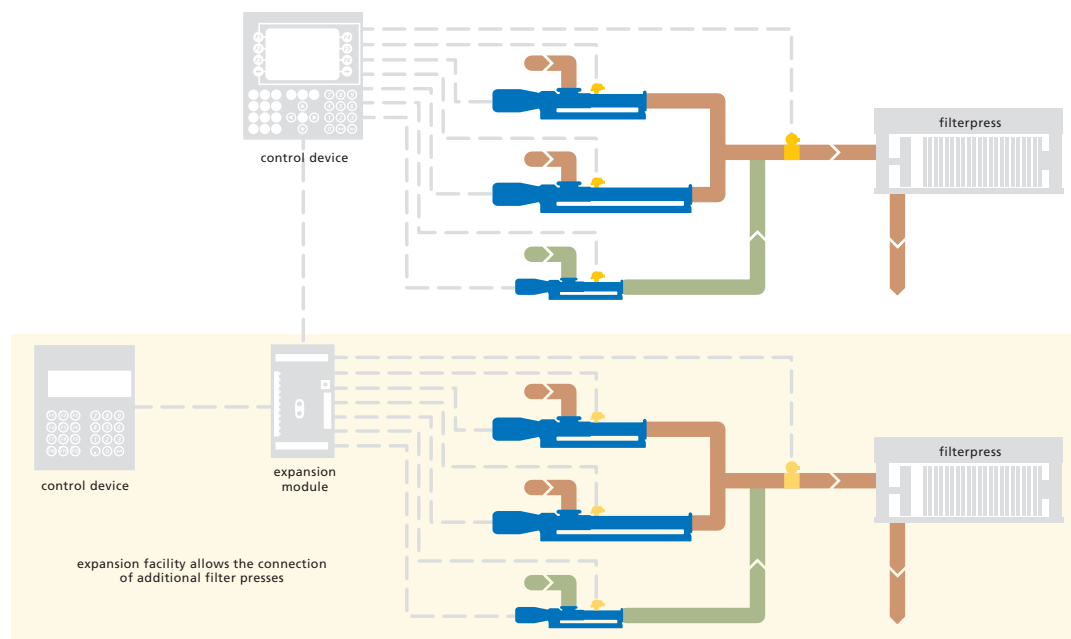
### seepex filter press feeding system

The FPPU pressure control is a complete system solution for filling filter presses. The modular structure permits a simple and cost-efficient adaptation to the respective customer demands. Connection to a site control system is possible

through various bus systems. Several filter presses can be charged through the use of expansion modules. The following functions are integrated in the compact control:

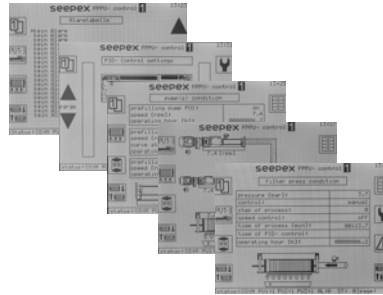
|  |   |
|--|---|
| <b>Setting of the delivery rate</b>                    | The delivery rate of the pumps depends on the filtration pressure and is set through a freely programmable characteristic curve.                                    |
| <b>Integrated prefilling pump</b>                      | A prefilling pump can be connected for faster filling of the filter press.  |
| <b>Integrated dosing pump</b>                          | A dosing pump can be connected to dose additional chemicals.  |
| <b>Pressure control</b>                                | In the final phase of the filling process, the filter press is filled with constant pressure. The reference variable of the pressure control can be set as desired. |
| <b>Operating and fault messages</b>                    | Depending on the type of fault, either a warning is issued or the process is switched off. Faults are listed in clear text.   |
| <b>Dry running protection</b>                          | for protecting the pumping elements rotor and stator against dry running.   |
| <b>Overpressure protection</b>                         | with freely adjustable shut-off pressure.   |
| <b>Settable parameters</b>                             | Plant and control parameters such as drive data and limit values can be set. All the entries are password-protected.  |
| <b>Saving the plant-specific characteristic curves</b> | For fast and simple plant setting, the characteristic curves can be saved and retrieved again later on.   |
| <b>Connection to site systems</b>                      | Connection to a site control system is possible through various bus systems.  |
| <b>Remote data transfer</b>                            | permits fault diagnosis through a GSM modem controlled from the seepex headquarters.  |

### Process of filter press feeding



## Characteristics of the pressure control FPPU

- ~ Simple operation through various display pages
- ~ Different operating languages can be set
- ~ Membrane keyboard for parameter entry and switching the control functions
- ~ Storage of the control parameters in the user ROM that is not affected by power loss
- ~ Additionally integrated resettable operating hours meter



Control device with various display pages permits simple and user-friendly operation

## Technical Data

|                           |  |                            |   |
|---------------------------|--|----------------------------|---|
| <b>Structure:</b>         | PLC with integrated LC-display   | <b>Processor</b>           |   |
| <b>Supply:</b>            | 24V DC   | <b>Command cycle time:</b> | approx. 0.4µs (with 70% bit and 30% analogue processing)  |
| <b>Power consumption:</b> | max. 20W   | <b>Memory structure:</b>   | User RAM 700 kByte<br>System PROM 600 kByte FlashPROM<br>User PROM 1.4 MByte FlashPROM  |
| <b>Front:</b>             | LC-display: 5.7"<br>320 x 240 pixels, monochrome<br>Multilingual display<br>Membrane keyboard with 40 keys<br>16 keys with LEDs<br>Protection class IP65 (front) | <b>Signals:</b>            | 10 digital inputs with 24 V DC rated voltage<br><br>4 analogue power inputs 0 (4) - 20 mA (optionally 0 - 10 V DC possible)<br><br>8 digital outputs with 24V DC rated voltage, maximum load 400 mA<br><br>4 analogue power outputs 0 (4) - 20 mA (optionally 0 - 10 V DC possible) |
| <b>Dimensions:</b>        | 220 x 205 x 111 (HxWxD)  | <b>Expansions:</b>         | Three expansion slots for adaptation to additional customer demands   |
| <b>Installation:</b>      | in the control cabinet door  | <b>Communication:</b>      | Serial RS232 interface for connecting a programming device or a modem for service purposes. A CAN interface can be used for additional expansions.  |
|                           |  | <b>Buffer battery:</b>     | Lithium battery 3V / 950 mAh, life cycle approx. 5 years  |