

Booster sets

MARKET SECTORS

CIVIL, INDUSTRIAL

APPLICATIONS

- Water network supply in condominiums, offices, hotels, shopping centres, factories.
- Water supply to agricultural water networks (e.g. irrigation).

GTKS20 Series

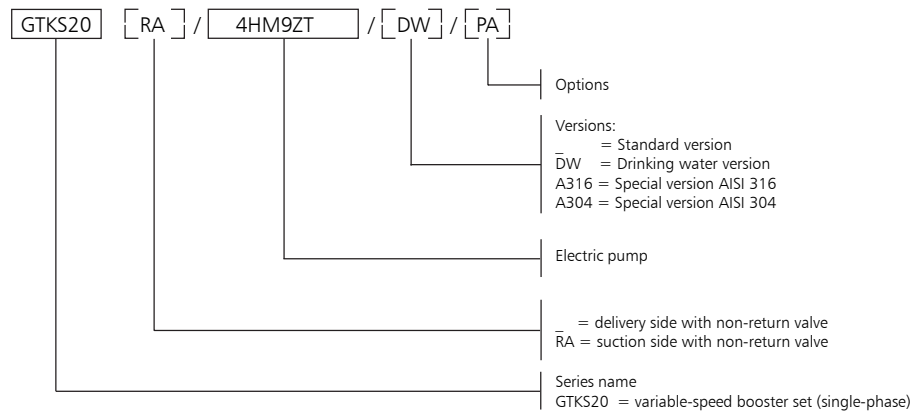


GTKS20

SPECIFICATIONS

- **Flow rate** up to 52 m³/h.
- **Head** up to 90 m.
- Electrical panel supply voltage: 1 x 230V ± 10%.
- Frequency: 50 Hz.
- Protection class electrical panel IP 55.
- Protection class converter IP 55.
- Maximum electric pump power 2 x 1,1 kW.
- **Motor start** with converter.
- Maximum temperature of pumped liquid:
from 0 to +80° C (for BG, CEA, CA, SV).
from 0 to +60° C (for HMT, HMZT).
- **Horizontal design pump:**
BG-CEA-CA-HMT-HMZT series.
Maximum operating pressure 8 bar.
- **Vertical design pump:**
SV..T series.
Maximum operating pressure 16 bar.

TWO-PUMP BOOSTER SETS, GTKS20 SERIES IDENTIFICATION CODE



OPTIONS (ON DEMAND)

- 3A Booster set with electric pump certified 1A (Factory test reports issued by the end of assembly line; it includes QH curve).
- 3B Booster set with electric pump certified 1B (Test report issued by Audit Test Lab; it includes QH curve, efficiency and power).
- 60 Booster set with 60Hz supply voltage.
- BAP High pressure switch installed on the delivery manifold.
- C9 Delivery manifold at 90° with bend. The tanks can not be installed directly on the manifold.
- CM Suction or delivery manifold larger than standard size.
- CP Dry contact version: inverter in fault.
- IP65 IP65 version control panel.
- MA Pressure gauge installed on suction manifold.
- NL Dutch market version.
- PA Minimum pressure gauge installed on the suction manifold for dry-running protection.
- PQ Booster set with high suction pressure (pressure gauge/pressure switches/pressure transmitter increased of one range).
- RA Non return valves mounted on suction side (i.e GTKS20RA/SV...).
- RE Heaters inside the control panel, with thermostat.
- SA No intake: no suction valves and suction manifold.
- SC Group with no control devices, such as pressure switches and transmitters; the pressure gauge is present.
- SCA No suction manifold (suction valves present).
- SCM Without delivery manifold (no pressure transmitters and pressure gauge, with delivery valves).
- SM Without delivery: without valves on delivery and without delivery manifold.
- TS Booster set with pumps equipped with special mechanical seals.
- UK UK market version.
- WM Wall-mounted electrical panel with fixing tabs. Cables L= 5m

AVAILABLE VERSIONS

- A304 Main component in contact with liquid in stainless steel Aisi 304 or superior; gasket, sealing tape and thread sealing are suitable for drinking water. Bolts and screws galvanized. Flanges not in contact with the liquid in galvanized steel.
- B304 Main component in contact with liquid in stainless steel Aisi 304 or superior; gasket, sealing tape and thread sealing are suitable for drinking water. Bolts and screws in Aisi 304 or superior. Flanges not in contact with the liquid in Aisi 304 or superior.
- C304 Main component in contact with liquid in stainless steel Aisi 304 or superior; gasket, sealing tape and thread sealing are suitable for drinking water. Baseplate, frame, supports, bolts and screws in Aisi 304 or superior. Flanges not in contact with the liquid in Aisi 304 or superior. Valves and their components completely in Aisi 304 or superior (body, disc, plate).
- A316 Main component in contact with liquid in stainless steel Aisi 316; gasket, sealing tape and thread sealing are suitable for drinking water. Pumps in Aisi 316 material. Bolts and screws galvanized. Flanges not in contact with the liquid in galvanized steel.
- B316 Main component in contact with liquid in stainless steel Aisi 316; gasket, sealing tape and thread sealing are suitable for drinkingwater. Pumps in Aisi 316 material. Bolts and screws in Aisi 316. Flanges not in contact with the liquid in Aisi 316.
- C316 Main component in contact with liquid in stainless steel Aisi 316; gasket, sealing tape and thread sealing are suitable for drinking water. Pumps in Aisi 316 material. Baseplate, frame, supports, bolts and screws in Aisi 316. Flanges not in contact with the liquid in Aisi 316. Valves and their components completely in Aisi 316 (body, disc, plate).
- DW Main component in contact with fluid suitable for drinking water or in stainless steel AISI 304 or superior quality.

TWO-PUMP BOOSTER SETS, GTKS20 SERIES OPERATING CHARACTERISTICS AND LIMITS

Liquids handled	Water containing no gas or corrosive and/or aggressive substances.
Fluid temperature	Depending on the type of pump: SV..T, CEA, CA: da oltre -10°C a + 80 °C. HMT, HMZT: da oltre -10°C a + 60 °C.
Ambient temperature	Above 0°C a + 40 °C.
Maximum operating pressure	Max 8 bar, 10 bar, 16 bar Depending on the type of pump.
Minimum inlet pressure	According to NPSH curve and losses, with a minimum margin of 0.5 m.
Maximum inlet pressure	The inlet pressure added to the pressure of the pump at zero flow must be lower than the maximum operating pressure of the set
Hourly starts (single pump)	Max 60 up to 3 kW, above 3 kW and up to 4 kW max 40.
Installation	Indoors, protected from the weather. Away from heat sources. Max elevation 1000 m ASL. Max humidity 50% without condensation.
Sound emission	Sound emission level Lp < 70 dB(A) for two-pump set with 2900 rpm motor with power up to 2 x 4 kW.

gts20-en_2p_a_ti

TABLE OF MATERIALS

NAME	MATERIAL			
	(STANDARD)	DW	A304	A316
Manifolds	AISI 304	AISI 304	AISI 304	AISI 316
On-off valves	Nickel-plated brass	Nickel-plated brass	AISI 316	AISI 316
Non-return valves	Brass	Brass	AISI 304	AISI 316
Pressure switches	Chrome plated zinc alloy	AISI 304	AISI 304	AISI 304
Pressure trasmitter	AISI 316	AISI 316	AISI 316	AISI 316
Caps/plugs/flanges	Galvanized steel	AISI 304	AISI 304	AISI 316
Bracket	Galvanized steel	Galvanized steel	Galvanized steel	Galvanized steel
Base	Galvanized steel	Galvanized steel	Galvanized steel	Galvanized steel
Pump Body	AISI 304	AISI 304	AISI 304	AISI 316(*)

* Not all models of electric pumps are available in AISI 316. Consult technical catalog of pump.

gts20_2p-en_a_tm

TWO-PUMP BOOSTER SETS, GTKS20 SERIES MAIN COMPONENTS

- **Main On-off valves** on suction and discharge side of each pump, ball type with threaded coupling.
- **Check valve** on discharge side of each pump, spring-loaded type, with threaded coupling. For applications with air-cushion surge tanks, they are mounted on the suction side and the set is equipped with a connector for G 1/2" threaded flexible air feeder pipe (serie GTKS20..RA).
- **Suction manifold** made of galvanized or AISI 304 stainless steel with threaded ends. Threaded coupling for water charging.
- **Delivery manifold** made of galvanized or AISI 304 stainless steel with threaded ends. Fitted with R1" threaded couplings with caps to allow connection of 24 or 20-litre diaphragm pressure vessels.
- **Pressure gauge and 2 control transmitters** located on the delivery side of the unit.
- **Various couplings** in nickel-plated brass, galvanized steel or stainless steel depending on
- **Mounting base**, for pumpset and panel mounting brackets in galvanized steel.
- **Electric control panel**, IP55 protection class.

STANDARD VERSIONS AVAILABLE

See table of materials.

STANDARD VERSION For general applications

Brass or nickel-plated brass valves, brass or galvanized steel couplings.

DW VERSION (GTKS20../DW)

For drinking water applications.

The main components in contact with the liquid are certified suitable for drinking water or are made of AISI 304 or higher grade of stainless steel.

AISI304 Version (GTKS20../A304), AISI 316 (GTKS20../A316)

For special applications

Manifolds, valves, non-return valves and main components with parts directly in contact with the pumped liquid are made of AISI 304 or AISI 316 stainless steel.

Accessories available on request:

- Devices **against dry running** in one of the following versions:
 - float switch, for positive suction head;
 - probe electrodes kit, for positive suction head;
 - minimum pressure switch, for positive suction head.
- **Surge tank** in the following versions:
 - Air-cushion surge tank with compressor and accessories for surge tank and compressor.
 - Diaphragm vessel as an alternative to the air-cushion tank.
- **Kit featuring** a 24 or 20-litre **diaphragm expansion vessel** with ball valve (one for each pump), in the following versions, depending on the maximum head of the pumps:
 - 24-litre 8 bar cylinder water vessel kit
 - 24-litre 10 bar cylinder water vessel kit
 - 24-litre 16 bar cylinder water vessel kit
 - 20-litre 25 bar cylinder water vessel kit
- **Alarm kit**;
- **Air feeder** for **RA** version.

SPECIAL VERSIONS AVAILABLE ON REQUEST

(Contact the Sales and technical Assistance Service)

- Support base in AISI 304, AISI 316 stainless steel.
- Units with stainless steel expansion vessels.
- Units with special valves.

TWO-PUMP BOOSTER SETS, GTKS20 SERIES CONTROL PANEL

Single-phase electrical power supply panel for protecting up to two three-phase electric pumps (3x230Vac), with Teknospeed frequency converter, made from polycarbonate, featuring a transparent door and protected to IP55.

Main characteristics:

- Automatic switch with overload protection for each converter.
- Standard supply voltage: 1x230Vac +/-10%, 50/60Hz.
- No-water protection system device alternatives: float switch, minimum pressure switch, external contact. By using one optional module, to insert inside the board, electrode probes with sensitivity adjustment can be installed.
- A special version with "clean" potential-free contacts for signalling faults in each converter is available in request.



Electric panel

TEKNOSPEED FREQUENCY CONVERTER

Each pump is controlled via the Teknospeed frequency converter which modulates the speed of rotation in order to keep system pressure constant. It is supplied complete with power-on, pump running and fault LED's, and a remote booster relay for converter overload, no-water, overheating alarms.

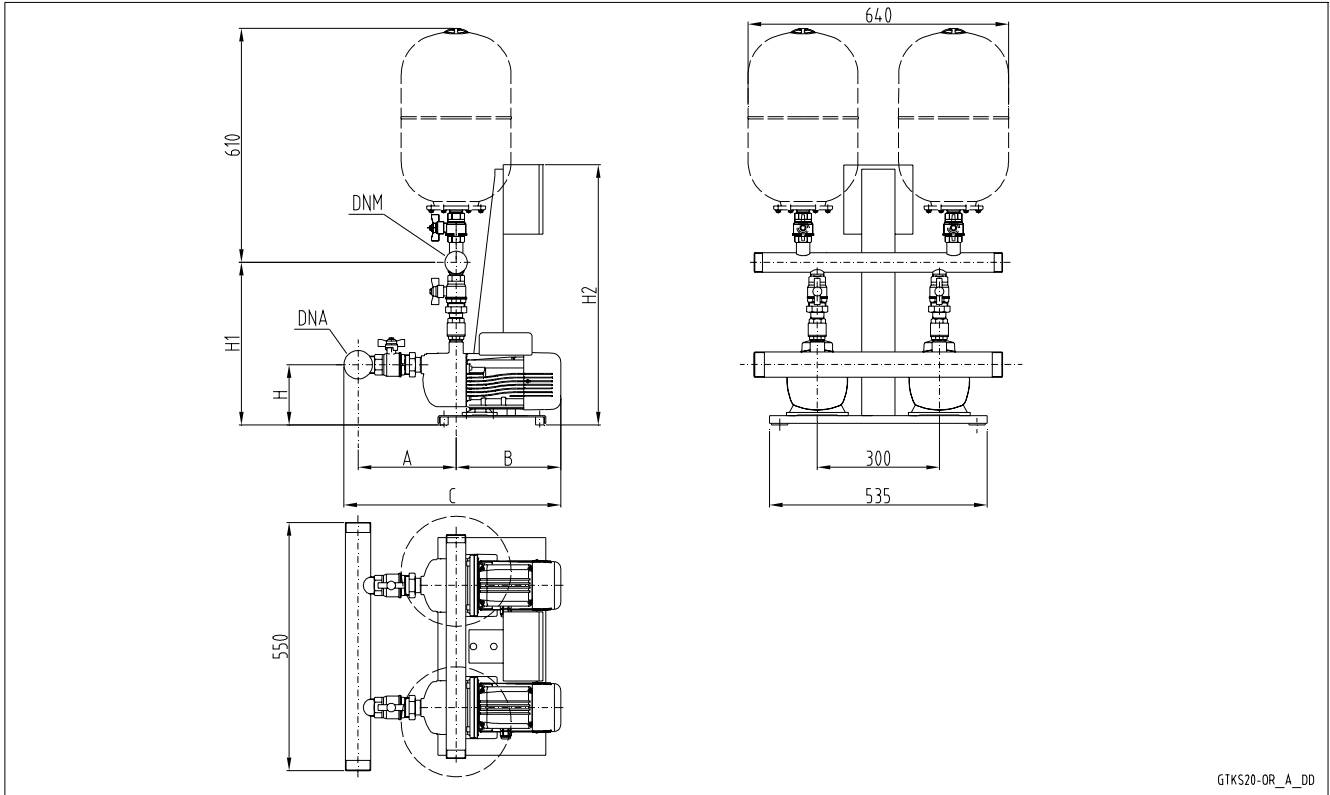
A float switch or an ON/OFF device protecting against dry running can also be installed. A serial line for transmitting information between the two units in order to assure cycle exchange, simultaneous operation in case of maximum demand and service continuity in case one pump is disabled.

Visual indications:
Green led: power on
Yellow led: converter operating and operating mode.
Flashing: speed adjustment
Constant: pressure control. Converter in stand-by
Red led: alarm active



Converter

TWO-PUMP BOOSTER SETS, GTKS20 SERIES HORIZONTAL ELECTRIC PUMPS WITH NON-RETURN VALVE ON DELIVERY SIDE



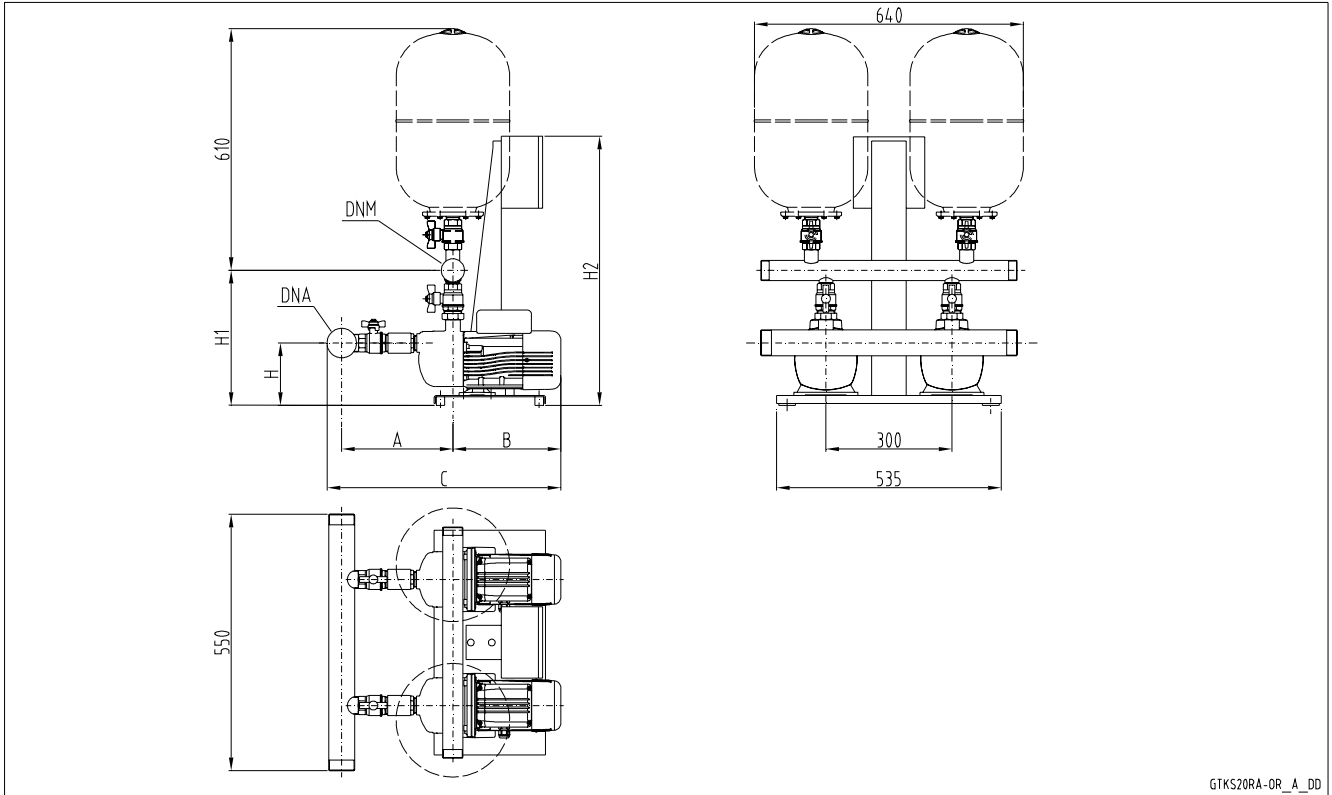
GTKS20-OR_A_DD

GTKS20

GTKS 20	DNA	DNM	A		B	C		H	H1		H2
			STD / DW	AISI		STD / DW	AISI		STD / DW	AISI	
BG3	R 2"	R 1 1/2"	214	299	297	541	626	189	423	501	640
BG5	R 2"	R 1 1/2"	214	299	311	555	640	189	423	501	640
BG7	R 2"	R 1 1/2"	214	299	356	600	685	189	423	501	640
BG9	R 2"	R 1 1/2"	214	299	356	600	685	189	423	501	640
BG11	R 2"	R 1 1/2"	214	299	356	600	685	189	423	501	640
2HM3ZT	R 2"	R 1 1/2"	241	326	249	520	605	149	382	460	640
2HM4ZT	R 2"	R 1 1/2"	266	351	249	545	630	149	382	460	640
2HM5ZT	R 2"	R 1 1/2"	291	376	249	570	655	149	382	460	640
2HM7ZT	R 2"	R 1 1/2"	316	401	308	654	739	141	374	452	640
4HM4ZT	R 2"	R 1 1/2"	241	326	249	520	605	149	382	460	640
4HM5ZT	R 2"	R 1 1/2"	266	351	249	545	630	149	382	460	640
4HM7ZT	R 2"	R 1 1/2"	291	376	308	629	714	141	374	452	640
4HM9ZT	R 2"	R 1 1/2"	316	401	308	654	739	141	374	452	640
CEA70/3	R 2"	R 1 1/2"	196	281	260	486	571	134	421	499	640
CEA70/5	R 2"	R 1 1/2"	196	281	274	500	585	134	421	499	640
CEA80/5	R 2"	R 1 1/2"	196	281	320	546	631	134	421	499	640
CEA120/3	R 2"	R 2"	196	281	274	500	585	134	476	505	640
CEA120/5	R 2"	R 2"	196	281	320	546	631	134	476	505	640
CEA210/2	R 2" 1/2"	R 2 1/2"	207	318	331	576	687	134	460	602	640
CEA210/3	R 2" 1/2"	R 2 1/2"	207	318	331	576	687	134	460	602	640
CEA370/1	R 2" 1/2"	R 2 1/2"	207	318	331	576	687	134	460	602	640
CA70/33	R 2"	R 1 1/2"	276	361	289	595	680	128	435	513	640
CA70/34	R 2"	R 1 1/2"	276	361	289	595	680	128	435	513	640
CA70/45	R 2"	R 1 1/2"	276	361	289	595	680	128	435	513	640
CA120/33	R 2"	R 2"	276	361	289	595	680	128	490	519	640

gtps20_or-en_e_td

TWO-PUMP BOOSTER SETS, GTKS20 RA SERIES HORIZONTAL ELECTRIC PUMPS WITH NON-RETURN VALVE ON SUCTION SIDE



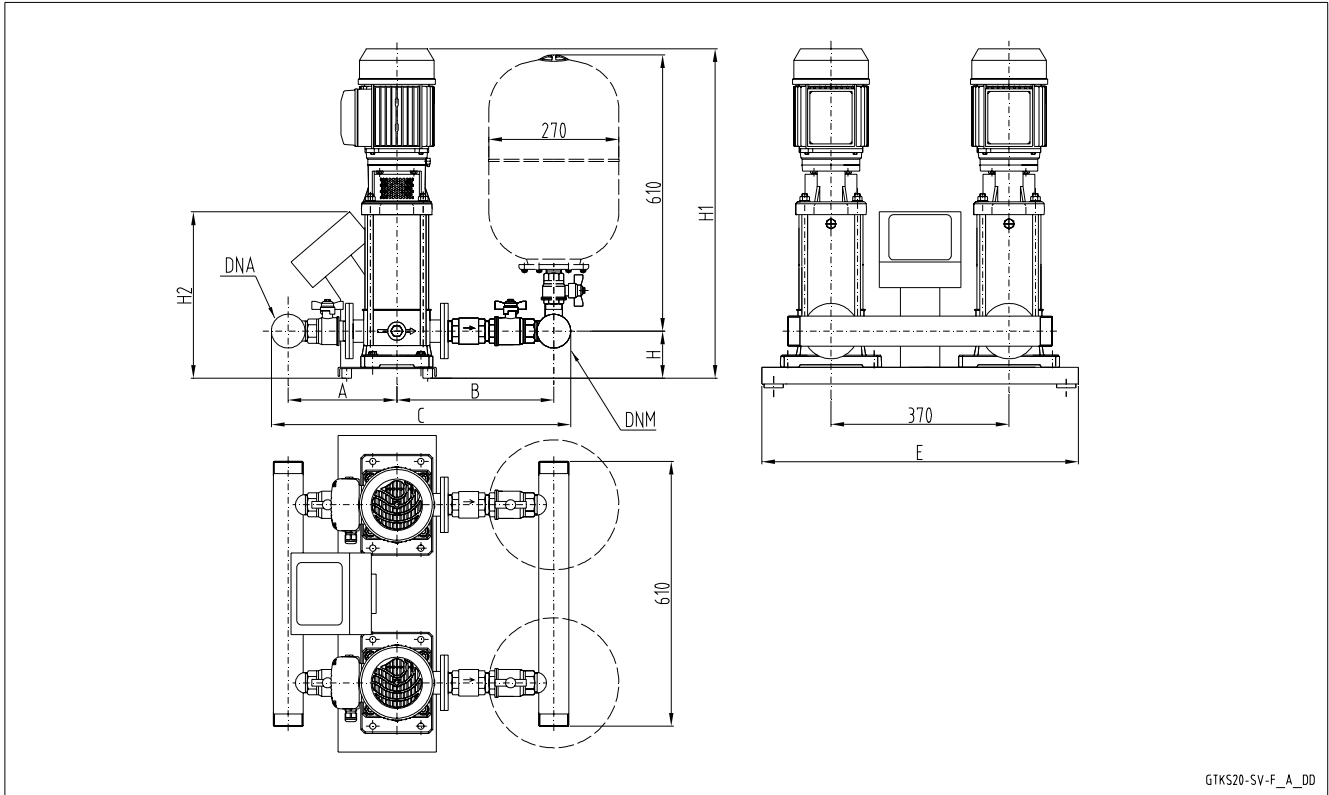
GTKS20RA-OR_A_DD

GTKS20

GTKS 20RA	DNA	DNM	A		B	C		H	H1		H2
			STD / DW	AISI		STD / DW	AISI		STD / DW	AISI	
BG3	R 2"	R 1 1/2"	267	429	297	653	815	189	371	454	640
BG5	R 2"	R 1 1/2"	267	429	311	653	815	189	371	454	640
BG7	R 2"	R 1 1/2"	267	429	356	653	815	189	371	454	640
BG9	R 2"	R 1 1/2"	267	429	356	653	815	189	371	454	640
BG11	R 2"	R 1 1/2"	267	429	356	653	815	189	371	454	640
2HM3ZT	R 2"	R 1 1/2"	294	456	249	573	735	149	330	413	640
2HM4ZT	R 2"	R 1 1/2"	319	481	249	598	760	149	330	413	640
2HM5ZT	R 2"	R 1 1/2"	344	506	249	623	785	149	330	413	640
2HM7ZT	R 2"	R 1 1/2"	369	531	308	707	869	141	322	405	640
4HM4ZT	R 2"	R 1 1/2"	294	456	249	573	735	149	330	413	640
4HM5ZT	R 2"	R 1 1/2"	319	481	249	598	760	149	330	413	640
4HM7ZT	R 2"	R 1 1/2"	344	506	308	682	844	141	322	405	640
4HM9ZT	R 2"	R 1 1/2"	369	531	308	707	869	141	322	405	640
CEA70/3	R 2"	R 1 1/2"	249	411	260	539	701	134	369	452	640
CEA70/5	R 2"	R 1 1/2"	249	411	274	553	715	134	369	452	640
CEA80/5	R 2"	R 1 1/2"	249	411	320	599	761	134	369	452	640
CEA120/3	R 2"	R 2"	249	411	274	553	715	134	375	458	640
CEA120/5	R 2"	R 2"	249	411	320	599	761	134	375	458	640
CEA210/2	R 2" 1/2	R 2 1/2"	287	422	331	656	791	134	398	483	640
CEA210/3	R 2" 1/2	R 2 1/2"	287	467	331	656	836	134	398	483	640
CEA370/1	R 2" 1/2	R 2 1/2"	287	467	331	656	836	134	398	483	640
CA70/33	R 2"	R 1 1/2"	329	491	289	648	810	128	383	466	640
CA70/34	R 2"	R 1 1/2"	329	491	289	648	810	128	383	466	640
CA70/45	R 2"	R 1 1/2"	329	491	289	648	810	128	383	466	640
CA120/33	R 2"	R 2"	329	491	289	648	810	128	389	472	640

gtps20ra_or-en_e_td

TWO-PUMP BOOSTER SETS, GTKS20 SERIES VERTICAL ELECTRIC PUMPS WITH NON-RETURN VALVE ON DELIVERY SIDE



GTKS20-SV-F_A_DD

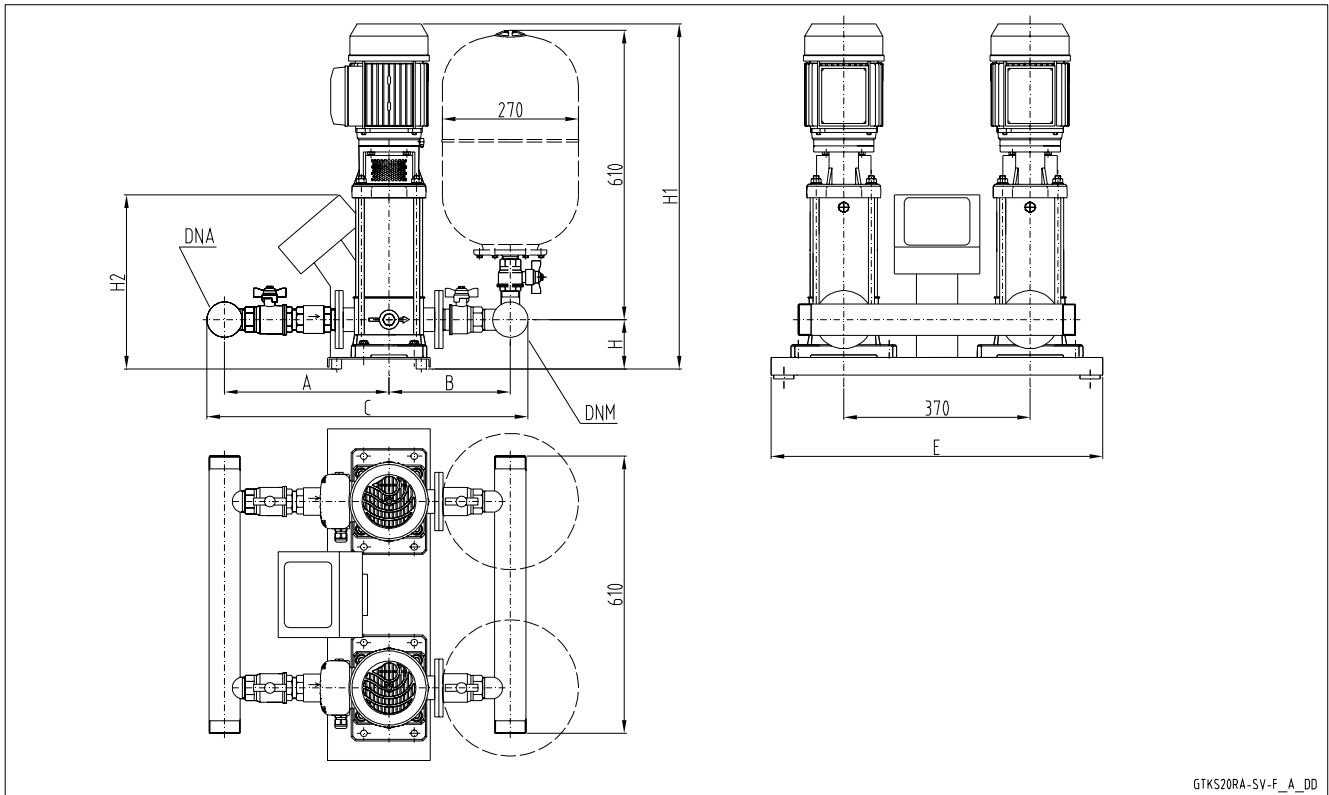
GTKS20

GTKS 20	DNA	DNM	A		B		C		E	H	H1	H2
			STD/DW	AISI	STD/DW	AISI	STD/DW	AISI				
3SV02F003T	R 2"	R 2"	252	301	304	346	616	707	658	98	510	629
3SV03F003T	R 2"	R 2"	252	301	304	346	616	707	658	98	510	629
3SV04F003T	R 2"	R 2"	252	301	304	346	616	707	658	98	530	629
3SV05F005T	R 2"	R 2"	252	301	304	346	616	707	658	98	572	629
3SV06F005T	R 2"	R 2"	252	301	304	346	616	707	658	98	592	629
3SV07F007T	R 2"	R 2"	252	301	304	346	616	707	658	98	654	629
3SV08F007T	R 2"	R 2"	252	301	304	346	616	707	658	98	674	629
3SV09F011T	R 2"	R 2"	252	301	304	346	616	707	658	98	694	629
3SV10F011T	R 2"	R 2"	252	301	304	346	616	707	658	98	714	629
3SV11F011T	R 2"	R 2"	252	301	304	346	616	707	658	98	734	629
3SV12F011T	R 2"	R 2"	252	301	304	346	616	707	658	98	754	629
5SV02F003T	R 2"	R 2"	265	311	327	431	652	802	658	98	500	629
5SV03F005T	R 2"	R 2"	265	311	327	431	652	802	658	98	547	629
5SV04F005T	R 2"	R 2"	265	311	327	431	652	802	658	98	572	629
5SV05F007T	R 2"	R 2"	265	311	327	431	652	802	658	98	639	629
5SV06F011T	R 2"	R 2"	265	311	327	431	652	802	658	98	664	629
5SV07F011T	R 2"	R 2"	265	311	327	431	652	802	658	98	689	629
5SV08F011T	R 2"	R 2"	265	311	327	431	652	802	658	98	714	629
10SV01F007T	R 2 1/2"	R 2 1/2"	297	356	362	497	735	929	682	114	654	640
10SV02F007T	R 2 1/2"	R 2 1/2"	297	356	362	497	735	929	682	114	654	640
10SV03F011T	R 2 1/2"	R 2 1/2"	297	356	362	497	735	929	682	114	686	640

Dimensions in mm. Tolerance ± 10 mm.

gths20_esv-f-en_a_td

TWO-PUMP BOOSTER SETS, GTKS20 RA SERIES VERTICAL ELECTRIC PUMPS WITH NON-RETURN VALVE ON SUCTION SIDE



GTKS20RA-SV-F_A_DD

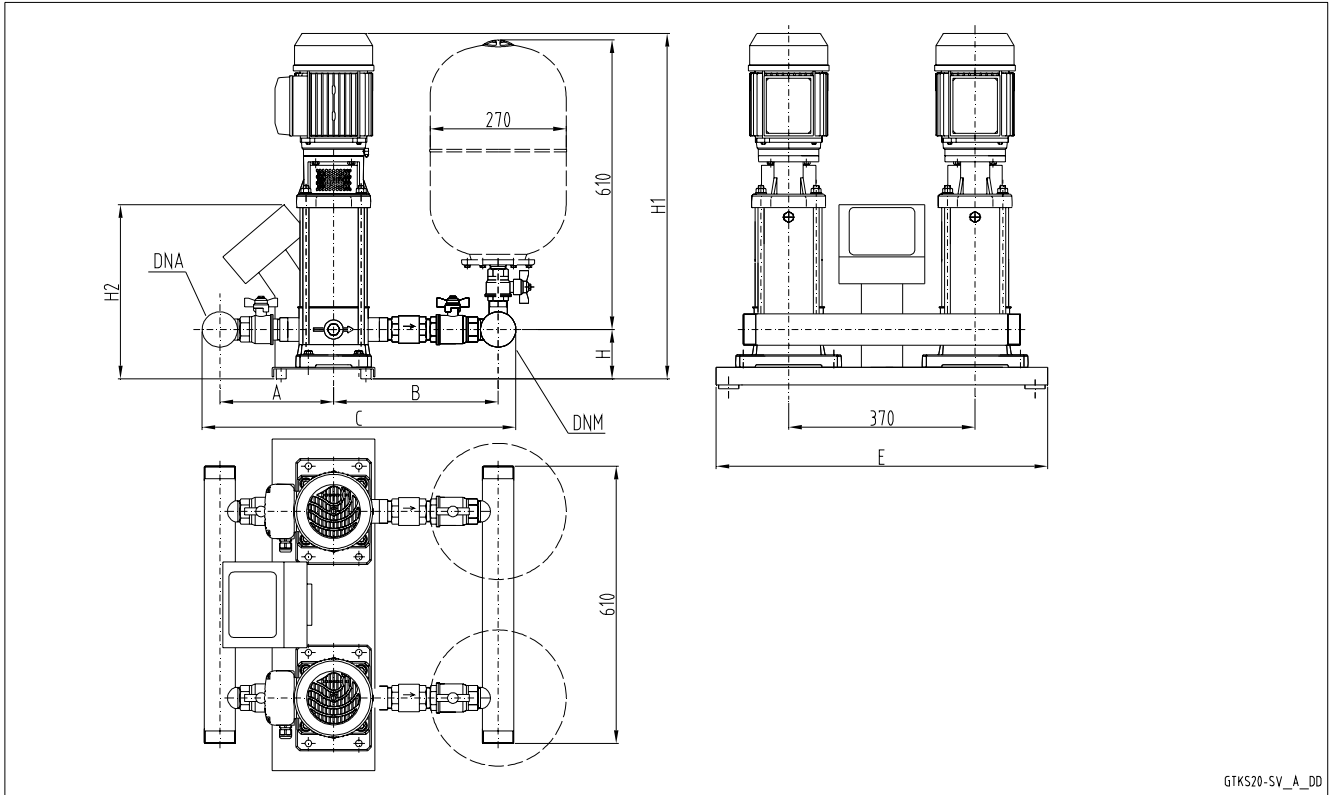
GTKS20

GTKS 20RA	DNA	DNM	A		B		C		E	H	H1	H2
			STD/DW	AISI	STD/DW	AISI	STD/DW	AISI				
3SV02F003T	R 2"	R 2"	297	350	287	301	644	711	658	98	510	629
3SV03F003T	R 2"	R 2"	297	350	287	301	644	711	658	98	510	629
3SV04F003T	R 2"	R 2"	297	372	287	301	644	733	658	98	530	629
3SV05F005T	R 2"	R 2"	297	372	287	301	644	733	658	98	572	629
3SV06F005T	R 2"	R 2"	297	372	287	301	644	733	658	98	592	629
3SV07F007T	R 2"	R 2"	297	372	287	301	644	733	658	98	654	629
3SV08F007T	R 2"	R 2"	297	372	287	301	644	733	658	98	674	629
3SV09F011T	R 2"	R 2"	297	372	287	301	644	733	658	98	694	629
3SV10F011T	R 2"	R 2"	297	372	287	301	644	733	658	98	714	629
3SV11F011T	R 2"	R 2"	297	372	287	301	644	733	658	98	734	629
3SV12F011T	R 2"	R 2"	297	372	287	301	644	733	658	98	754	629
5SV02F003T	R 2"	R 2"	318	431	313	311	691	802	658	98	500	629
5SV03F005T	R 2"	R 2"	318	431	313	311	691	802	658	98	547	629
5SV04F005T	R 2"	R 2"	318	431	313	311	691	802	658	98	572	629
5SV05F007T	R 2"	R 2"	318	431	313	311	691	802	658	98	639	629
5SV06F011T	R 2"	R 2"	318	431	313	311	691	802	658	98	664	629
5SV07F011T	R 2"	R 2"	318	431	313	311	691	802	658	98	689	629
5SV08F011T	R 2"	R 2"	318	431	313	311	691	802	658	98	714	629
10SV01F007T	R 2 1/2"	R 2 1/2"	367	497	345	356	788	929	682	114	654	640
10SV02F007T	R 2 1/2"	R 2 1/2"	367	497	345	356	788	929	682	114	654	640
10SV03F011T	R 2 1/2"	R 2 1/2"	367	497	345	356	788	929	682	114	686	640

Dimensions in mm. Tolerance ± 10 mm.

gtps20ra_esv-f-en_a_td

TWO-PUMP BOOSTER SETS, GTKS20 SERIES VERTICAL ELECTRIC PUMPS WITH NON-RETURN VALVE ON DELIVERY SIDE



GTKS20-SV_A_DD

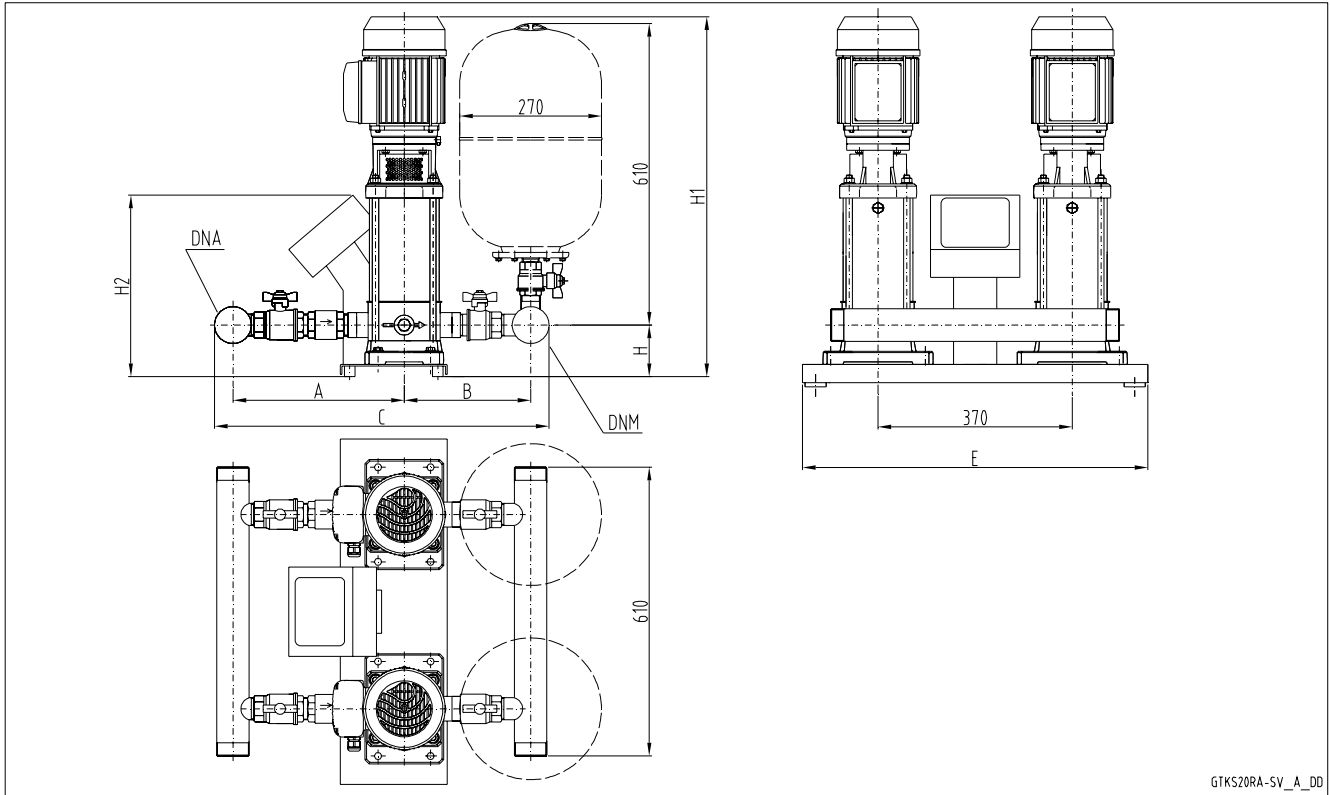
GTKS20

GTKS 20	DNA	DNM	A		B		C		E	H	H1	H2
			STD/DW	AISI	STD/DW	AISI	STD/DW	AISI				
3SV02T003T	R 2"	R 2"	233	312	285	367	578	739	658	73	485	629
3SV03T003T	R 2"	R 2"	233	312	285	367	578	739	658	73	485	629
3SV04T003T	R 2"	R 2"	233	312	285	367	578	739	658	73	505	629
3SV05T005T	R 2"	R 2"	233	312	285	367	578	739	658	73	547	629
3SV06T005T	R 2"	R 2"	233	312	285	367	578	739	658	73	567	629
3SV07T007T	R 2"	R 2"	233	312	285	367	578	739	658	73	629	629
3SV08T007T	R 2"	R 2"	233	312	285	367	578	739	658	73	649	629
3SV09T011T	R 2"	R 2"	233	312	285	367	578	739	658	73	669	629
3SV10T011T	R 2"	R 2"	233	312	285	367	578	739	658	73	689	629
3SV11T011T	R 2"	R 2"	233	312	285	367	578	739	658	73	709	629
3SV12T011T	R 2"	R 2"	233	312	285	367	578	739	658	73	729	629
5SV02T003T	R 2"	R 2"	248	336	310	403	618	799	658	73	475	629
5SV03T005T	R 2"	R 2"	248	336	310	403	618	799	658	73	522	629
5SV04T005T	R 2"	R 2"	248	336	310	403	618	799	658	73	547	629
5SV05T007T	R 2"	R 2"	248	336	310	403	618	799	658	73	614	629
5SV06T011T	R 2"	R 2"	248	336	310	403	618	799	658	73	639	629
5SV07T011T	R 2"	R 2"	248	336	310	403	618	799	658	73	664	629
5SV08T011T	R 2"	R 2"	248	336	310	403	618	799	658	73	689	629
10SV01T007T	R 2 1/2"	R 2 1/2"	291	386	356	471	723	933	682	114	654	640
10SV02T007T	R 2 1/2"	R 2 1/2"	291	386	356	471	723	933	682	114	654	640
10SV03T011T	R 2 1/2"	R 2 1/2"	291	386	356	471	723	933	682	114	686	640

Dimensions in mm. Tolerance ± 10 mm.

gths20_esv-t-en_a_td

TWO-PUMP BOOSTER SETS, GTKS20 RA SERIES VERTICAL ELECTRIC PUMPS WITH NON-RETURN VALVE ON SUCTION SIDE



GTKS20

GTKS 20RA	DNA	DNM	A		B		C		E	H	H1	H2
			STD/DW	AISI	STD/DW	AISI	STD/DW	AISI				
3SV02T003T	R 2"	R 2"	285	367	268	312	613	739	658	73	485	629
3SV03T003T	R 2"	R 2"	285	367	268	312	613	739	658	73	485	629
3SV04T003T	R 2"	R 2"	285	367	268	312	613	739	658	73	505	629
3SV05T005T	R 2"	R 2"	285	367	268	312	613	739	658	73	547	629
3SV06T005T	R 2"	R 2"	285	367	268	312	613	739	658	73	567	629
3SV07T007T	R 2"	R 2"	285	367	268	312	613	739	658	73	629	629
3SV08T007T	R 2"	R 2"	285	367	268	312	613	739	658	73	649	629
3SV09T011T	R 2"	R 2"	285	367	268	312	613	739	658	73	669	629
3SV10T011T	R 2"	R 2"	285	367	268	312	613	739	658	73	689	629
3SV11T011T	R 2"	R 2"	285	367	268	312	613	739	658	73	709	629
3SV12T011T	R 2"	R 2"	285	367	268	312	613	739	658	73	729	629
5SV02T003T	R 2"	R 2"	310	403	296	336	666	799	658	73	475	629
5SV03T005T	R 2"	R 2"	310	403	296	336	666	799	658	73	522	629
5SV04T005T	R 2"	R 2"	310	403	296	336	666	799	658	73	547	629
5SV05T007T	R 2"	R 2"	310	403	296	336	666	799	658	73	614	629
5SV06T011T	R 2"	R 2"	310	403	296	336	666	799	658	73	639	629
5SV07T011T	R 2"	R 2"	310	403	296	336	666	799	658	73	664	629
5SV08T011T	R 2"	R 2"	310	403	296	336	666	799	658	73	689	629
10SV01T007T	R 2"1/2	R 2"1/2	356	471	339	386	771	933	682	114	654	640
10SV02T007T	R 2"1/2	R 2"1/2	356	471	339	386	771	933	682	114	654	640
10SV03T011T	R 2"1/2	R 2"1/2	356	471	339	386	771	933	682	114	686	640

Dimensions in mm. Tolerance ± 10 mm.

gtps20ra_esv-t-en_a_td