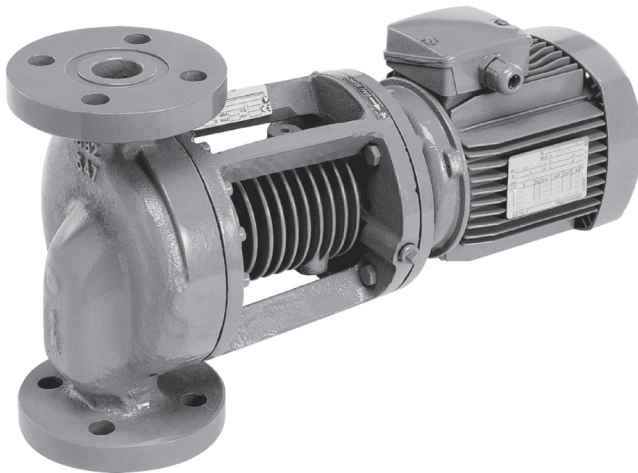


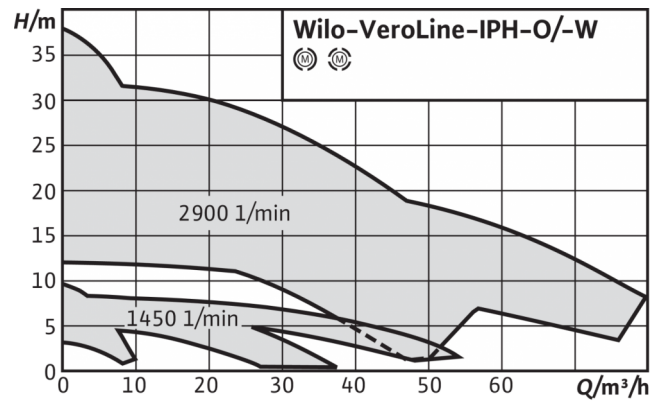
## Series description: Wilo-VeroLine-IPH-O

Wilo-VeroLine-IPH-O/-W



Similar to figure

VeroLine-IPH-O/-W



### Design type

Glanded pump in in-line design with flange connection

### Application

For pumping heat transfer oil in closed industrial circulation systems

### Scope of delivery

- Pump
- Installation and operating instructions
- Prewelding counter flanges
- Flange seals

### Type key

Example	<b>IPH-O 65/125-1.1/4</b>
<b>IPH-O</b>	In-line pump for heat transfer oil
<b>65</b>	Nominal diameter DN of the pipe connection
<b>125</b>	Impeller diameter
<b>1,1</b>	Nominal motor power P2 in kW
<b>4</b>	Number of poles

### Technical data

- Permissible temperature range -10 °C to +350 °C at max. 9 bar
- Mains connection 3~400 V, 50 Hz (others on request)
- Protection class IP 55
- Nominal diameter DN 20 to DN 80

### Materials

- Pump housing: Cast steel 1.0625
- Lantern: EN-GJS-400-15
- Impeller: EN-GJL-250
- Shaft: Stainless steel 1.4005
- Mechanical seal: AQ1VGG; other mechanical seals on request

### Description/construction

Single-stage, low-pressure centrifugal pump in in-line design with

- Mechanical seal
- Flange connection
- Lantern
- Motor with special shaft

### Special features/product advantages

- Self-cooled mechanical seal, independent of direction of rotation
- Great variety of applications due to a wide fluid temperature range without additional wearing parts

## Product list: Wilo-VeroLine-IPH-O

Product description	Article number
VeroLine-IPH-O 32/170-0.37/4	4089400
VeroLine-IPH-O 32/125-0.18/4	4089399
VeroLine-IPH-O 20/160-0.37/4	4089398
VeroLine-IPH-O 80/160-1,1/4	2121294
VeroLine-IPH-O 80/140-1,1/4	2121293
VeroLine-IPH-O 65/160-1,1/4	2121292
VeroLine-IPH-O 65/140-1,1/4	2121291
VeroLine-IPH-O 65/125-1,1/4	2121290
VeroLine-IPH-O 32/170-2,2/2	2121297
VeroLine-IPH-O 32/125-0,75/2	2121296
VeroLine-IPH-O 20/160-1,1/2	2121295
VeroLine-IPH-O 80/140-4/2	2121303
VeroLine-IPH-O 80/110-2,2/2	2121302
VeroLine-IPH-O 65/160-4/2	2121301
VeroLine-IPH-O 65/140-4/2	2121300
VeroLine-IPH-O 65/125-2,2/2	2121299
VeroLine-IPH-O 65/110-2,2/2	2121298