

Drainbox 600/1000/1250/1500 Drainage



Larger lifting/Sewage pump sets

Applications

Private housing, industry, commercial premises, leisure complex, hotel, motorway services and single households.

Materials

Each pump chamber is made up of strong, medium density polyethylene.

Equipment

All packages come complete with pipework pre-assembled in the chamber, 2 x 110 mm inlet rubbers (positioned & cut on site to suit), standard pedestrian access cover, ready for installation into the ground, float brackets after which the pumps and control equipment are added.

All twin pump sets are supplied with a control panel for fully automatic operation and a high level alarm beacon.

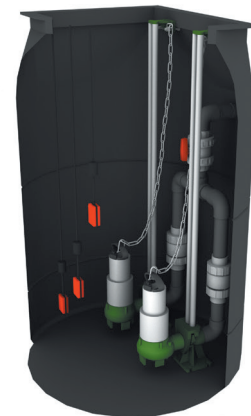
Chambers are available in different sizes: -600, 1000, 1250 & 1500 mm diameter. Larger diameters on request.

Choice of pumps from our Drainex/ Draincor/AL & GF range.

A control panel kiosk & tank extensions (500 mm height) are available as an optional extra.

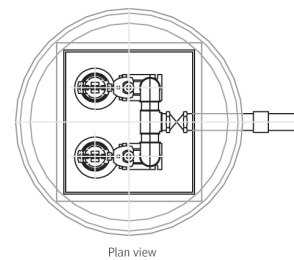
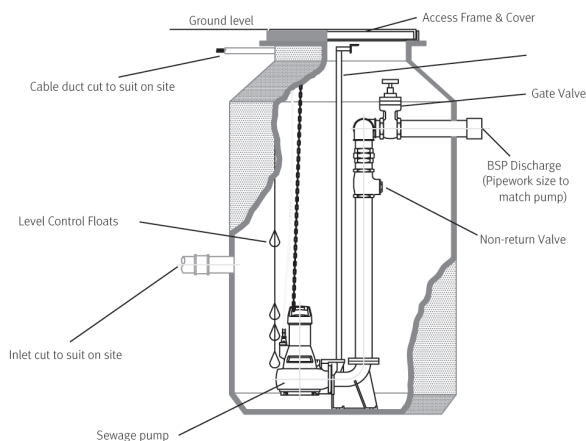


Single pump chamber



Twin pump chamber

Typical twin pump installation diagram



Characteristics table

Model	Pumps	Pipework size	Chamber size	Pump installation
Drainbox 600FS/GR	1 - 2	50 - 65 mm	600 x 620/1000/1500/2000	Free standing / Guide rail
Drainbox 1000GR	1 - 2	50 - 65 mm	1000 x 1500/2000/2500	Guide rail
Drainbox 1250GR	2	50 - 80 mm	1250 x 2000	Guide rail
Drainbox 1500GR	2	50 - 100 mm	1500 x 2000/2500/3000	Guide rail