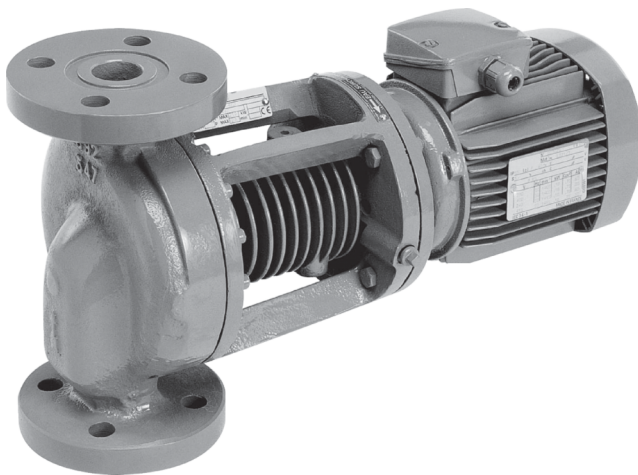


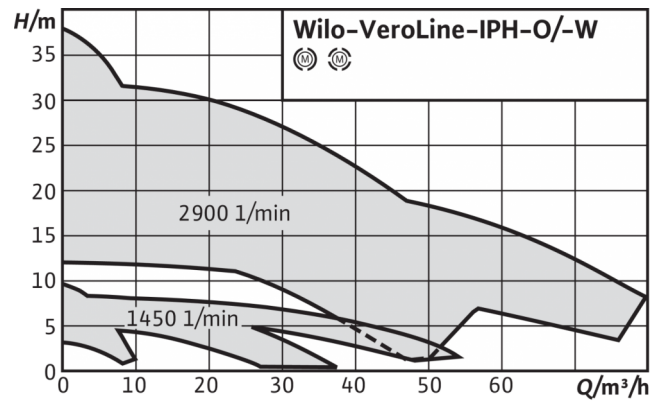
Series description: Wilo-VeroLine-IPH-W

Wilo-VeroLine-IPH-O/-W



Similar to figure

VeroLine-IPH-O/-W



Design type

Glanded pump in in-line design with flange connection

Application

For pumping hot water without abrasive matter in closed industrial circulation systems, district heating, closed heating systems, etc.

Scope of delivery

- Pump
- Installation and operating instructions
- Prewelding counter flanges
- Flange seals

Type key

Example	IPH-W 65/125-1.1/4
IPH-W	In-line pump for hot water applications
65	Nominal diameter DN of the pipe connection
125	Impeller diameter
1,1	Nominal motor power P2 in kW
4	Number of poles

Technical data

- Permissible temperature range -10 °C to +210 °C at max. 23 bar
- Mains connection 3~400 V, 50 Hz (others on request)
- Protection class IP 55
- Nominal diameter DN 20 to DN 80

Materials

- Pump housing: Cast steel 1.0625
- Lantern: EN-GJS-400-15
- Impeller: EN-GJL-250
- Shaft: Stainless steel 1.4005
- Mechanical seal: AQ1EGG; other mechanical seals on request

Description/construction

Single-stage, low-pressure centrifugal pump in in-line design with

- Mechanical seal
- Flange connection
- Lantern
- Motor with special shaft

Special features/product advantages

- Self-cooled mechanical seal, independent of direction of rotation
- Great variety of applications due to a wide fluid temperature range without additional wearing parts



Product list: Wilo-VeroLine-IPH-W

Product description	Article number
VeroLine-IPH-W 32/170-0.37/4	4089417
VeroLine-IPH-W 32/125-0.18/4	4089416
VeroLine-IPH-W 20/160-0.37/4	4089415
VeroLine-IPH-W 80/160-1,1/4	2121280
VeroLine-IPH-W 80/140-1,1/4	2121279
VeroLine-IPH-W 65/160-1,1/4	2121278
VeroLine-IPH-W 65/140-1,1/4	2121277
VeroLine-IPH-W 65/125-1,1/4	2121276
VeroLine-IPH-W 32/170-2,2/2	2121283
VeroLine-IPH-W 32/125-0,75/2	2121282
VeroLine-IPH-W 20/160-1,1/2	2121281
VeroLine-IPH-W 80/140-4/2	2121289
VeroLine-IPH-W 80/110-2,2/2	2121288
VeroLine-IPH-W 65/160-4/2	2121287
VeroLine-IPH-W 65/140-4/2	2121286
VeroLine-IPH-W 65/125-2,2/2	2121285
VeroLine-IPH-W 65/110-2,2/2	2121284