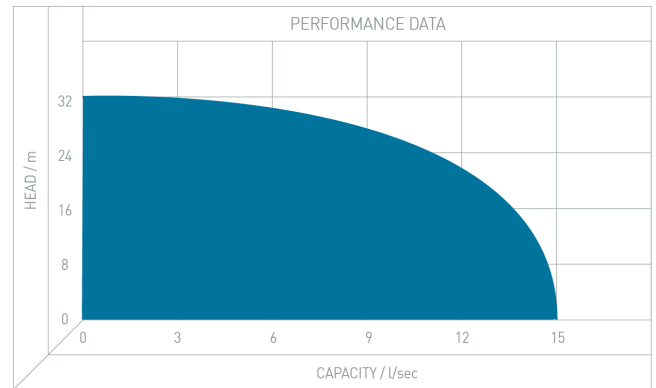


Mercury & Venus Package Pumping Stations

The Mercury and Venus Package Pumping Stations have been designed and manufactured by T-T to provide an efficient and economical way of installing a sewage/drainage pumping station.

Features

- Pump chambers are well engineered and manufactured, and have passed rigorous and detailed testing, site inspections and factory production control assessment.
- Each pump chamber is made of strong, medium-density polyethylene
- Smooth internal walls aid the hygienic disposal of effluents, to avoid smells and septicity.
- Packages come complete with pipework pre-assembled in the chamber, ready for installation into the ground, after which the pumps and control equipment are added.
- All package pumping stations are supplied with controls for fully automatic operation, and a high-level alarm indicator.
- Units can be adapted to suit individual requirements at manufacturing stage.
- Packages are available on short lead-times to fit in with tight construction schedules.
- Models can be supplied with an extension turret to allow the installer to change the depth of the chamber to suit site requirements.
- Round access cover for increased safety and suitability for international installation.



Options Available

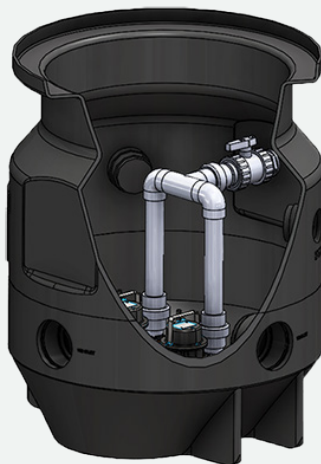
MERCURY SINGLE/DUAL PUMP

The Mercury is ideal for small flows from a single dwelling and where excavation depth is limited.

Compatible pumps:

- Cutter 80mm
- Grinder 50mm
- Vortex 50mm/80mm

Dual pumps only available with 50mm vortex/grinder.



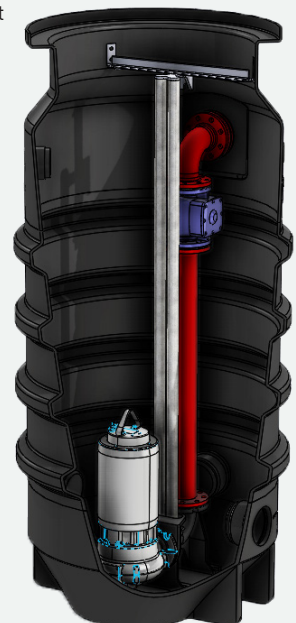
VENUS SINGLE/DUAL PUMP

The Venus chamber is the most popular size for use in single dwellings, toilet blocks or small offices.

Compatible pumps:

- Cutter 80mm
- Grinder 50mm
- Vortex 50mm/80mm

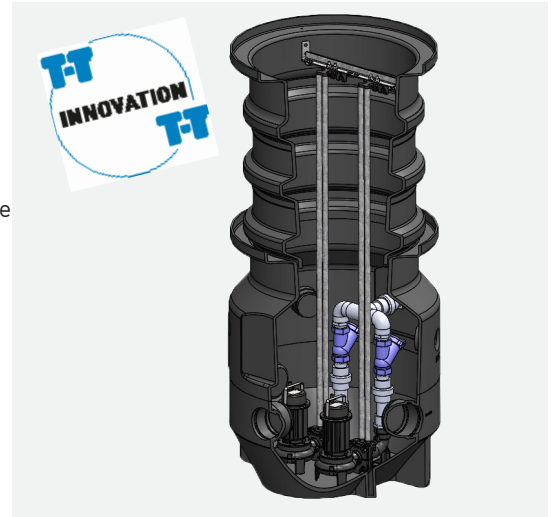
Dual pumps only available with 50mm vortex/grinder.



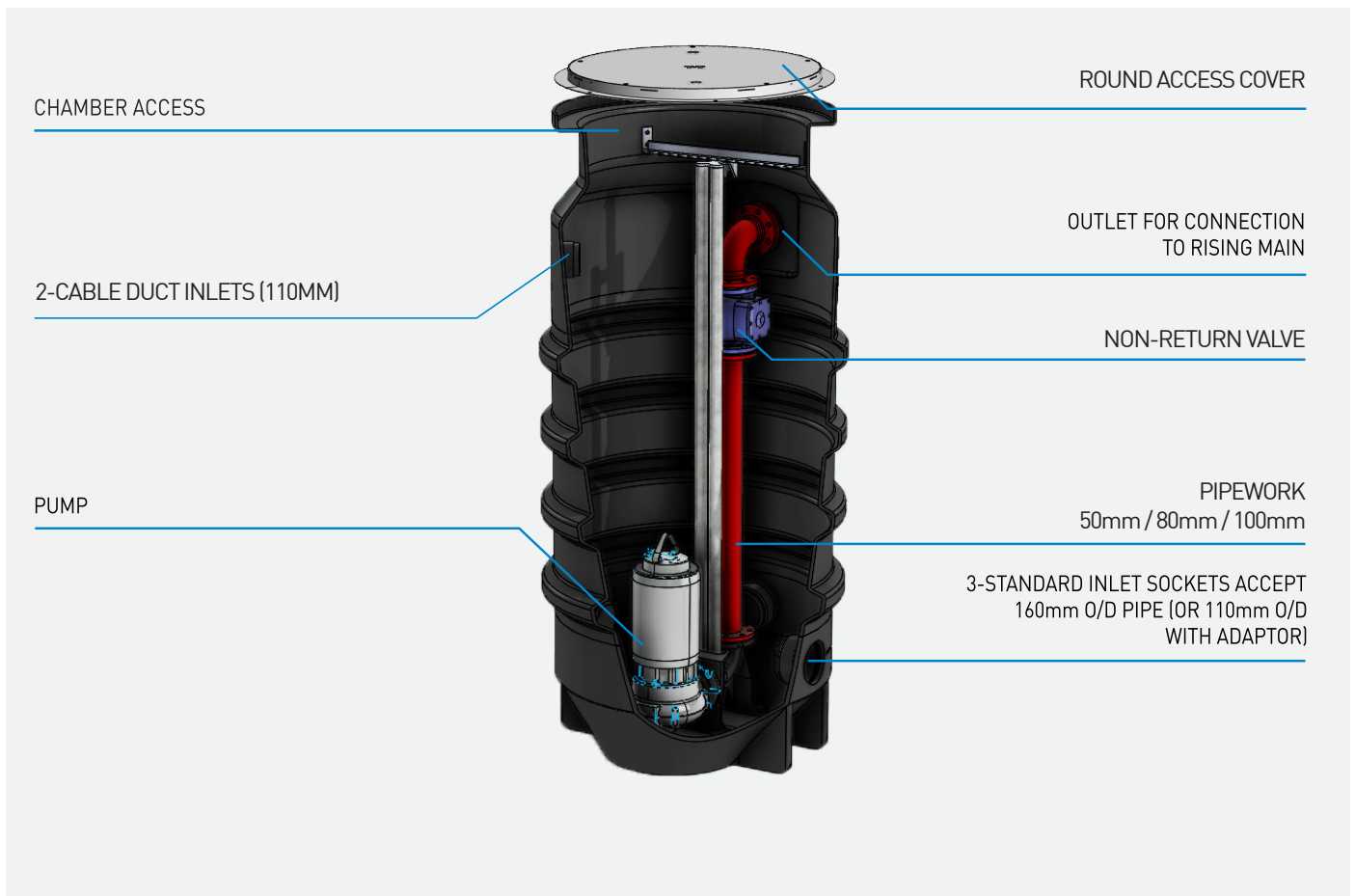
Extension Turret

The extension turret is an innovative design that allows the installer to change the depth of the chamber installation to suit site specific levels. The previous range was restricted to the station design depth only, however T-T have witnessed that due to site complications and requirements it would be useful to be able to extend the depth of the tank.

The extension turret is placed on top of the tank and clamped and sealed in place and can be cut at set increments to adjust the height of the pumping station chamber to suit requirements. The focus on this requirement is to aid in the reduction of installation time and to provide product flexibility in site conditions.

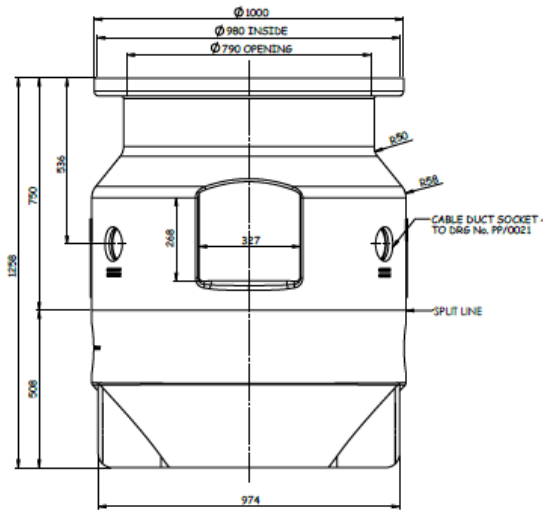


Typical Single Package Pumping Station

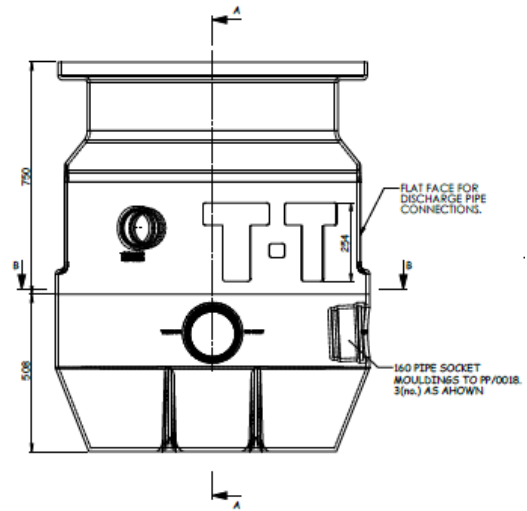


Dimensional Drawings

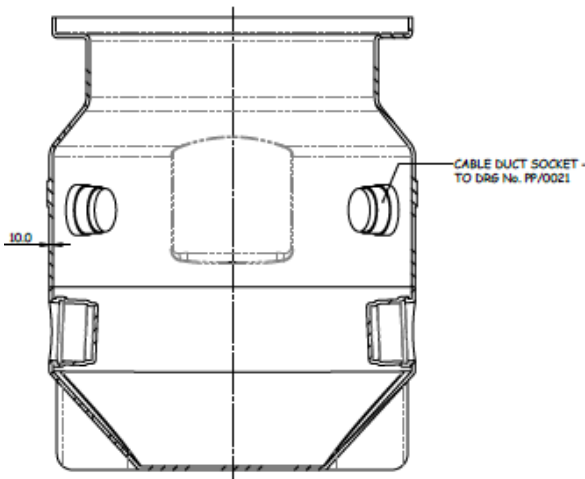
MERCURY SINGLE/DUAL PUMP



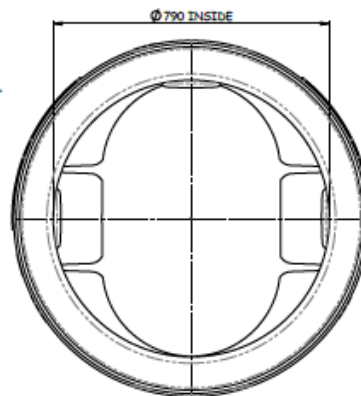
Front Elevation



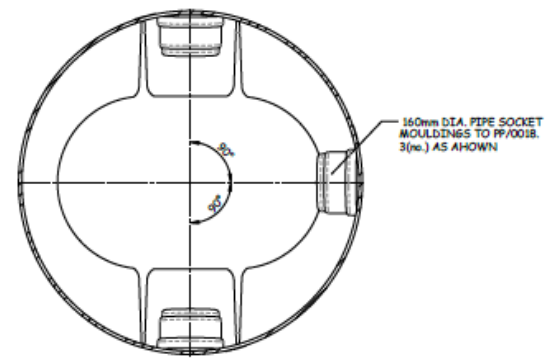
Side Elevation



Section A-A



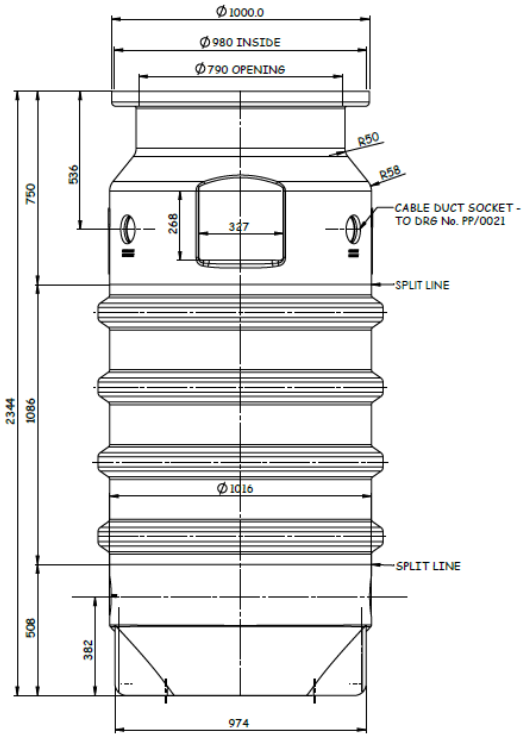
Plan View



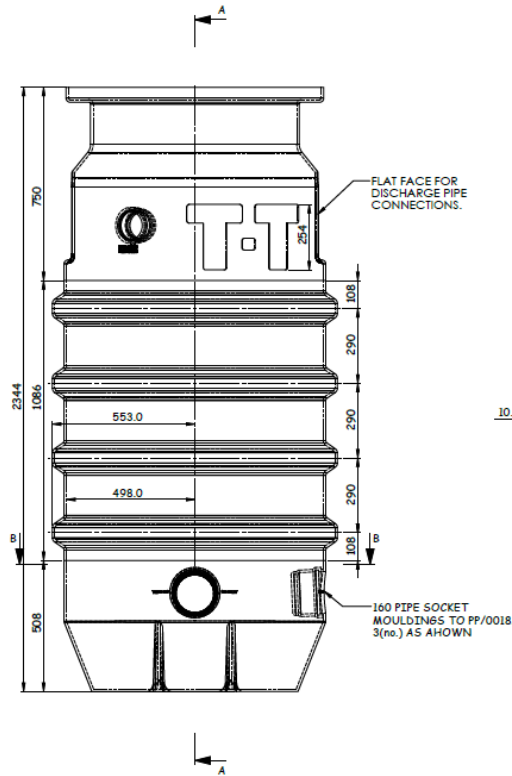
Section B-B

Dimensional Drawings

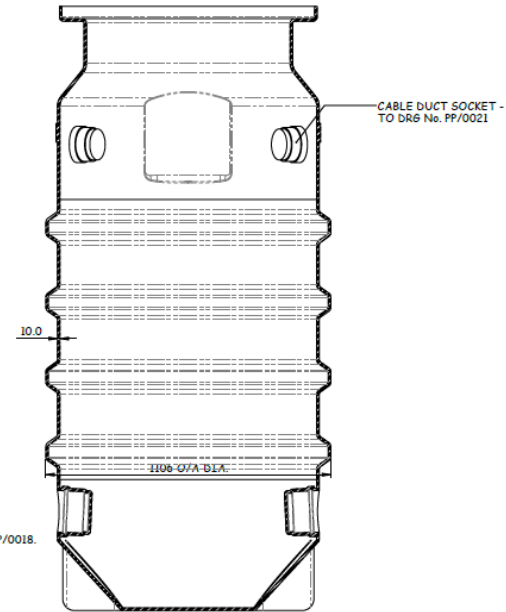
VENUS SINGLE/DUAL PUMP



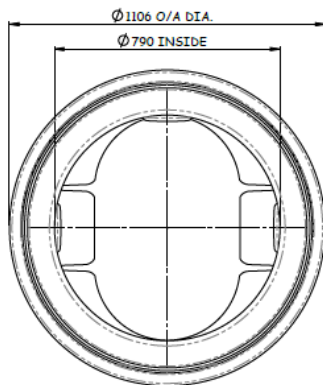
Front Elevation



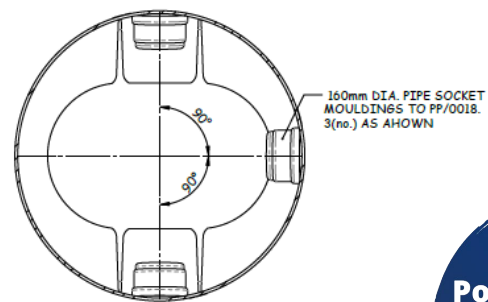
Side Elevation



Section A-A



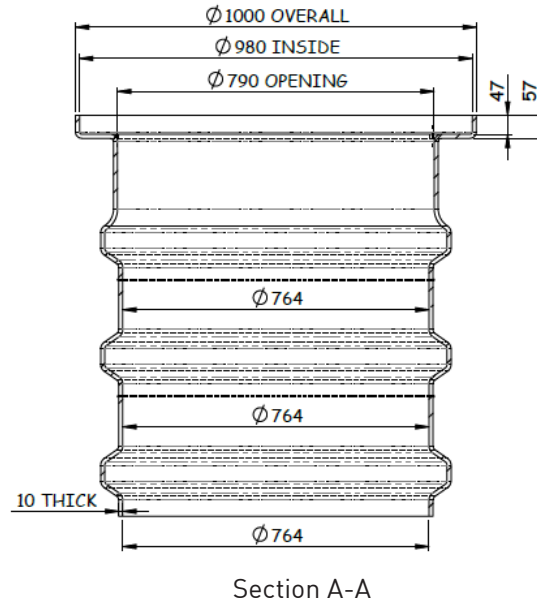
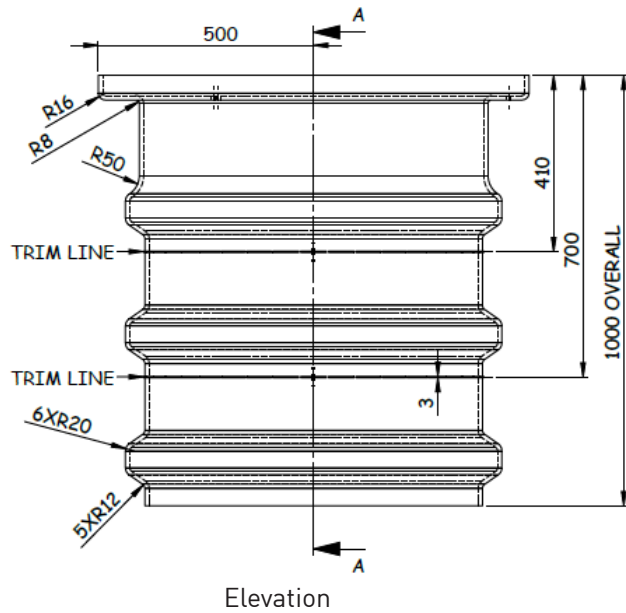
Plan View



Section B-B

Dimensional Drawings

EXTENSION TURRET

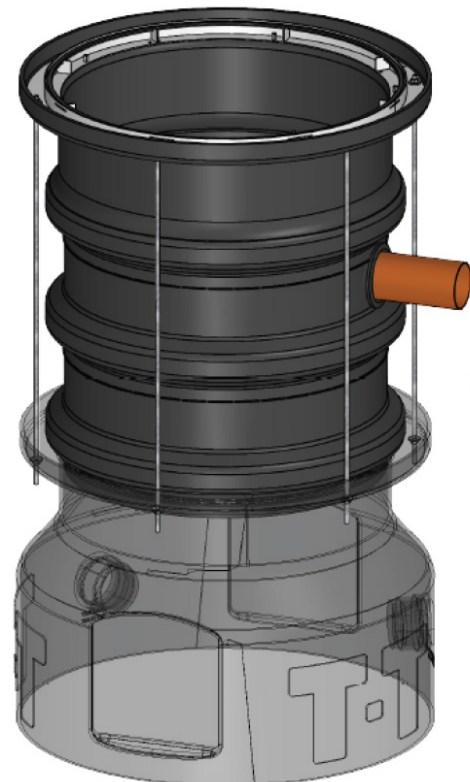


EXTENSION TURRET CLAMP KIT + HIGH LEVEL DUCT CONNECTION

The turret clamp kit is supplied as standard with the extension turret, along with one Ø110mm gasket, additional gaskets are available on request.



110mm Gasket



Extension Turret Clamp Kit