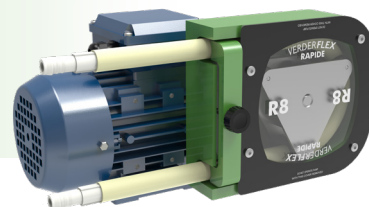


Verderflex

Rapide R8



VERDERFLEX®

Verderflex Rapide R8 Specifications

| | |
|-----------------------|---|
| Standard Speeds | 68, 137 and 196 RPM |
| Control | Inverter Optional |
| Rotor Assembly | Anodised Aluminium with Three Nylatron® Rollers |
| Voltage | 230/400V 50Hz (Single Phase Available to special order) |
| Installed Motor Power | 0.18 kW 50Hz |
| Protection Class | IP55 |
| Standard Tube Options | Verderprene, Silicone |
| Tube Size | 12.7 x 3.2 mm |
| Weight | 7kg |

Flow Rates

| Tube | RPM | Flow ml/min | Flow l/hr |
|------------|-----|-------------|-----------|
| 12.7 x 3.2 | 68 | 2,833 | 170 |
| 12.7 x 3.2 | 137 | 5,500 | 330 |
| 12.7 x 3.2 | 196 | 7,833 | 470 |

**actual speed and flow rates may vary depending on motor speeds, the medium being pumped and the actual application setup*

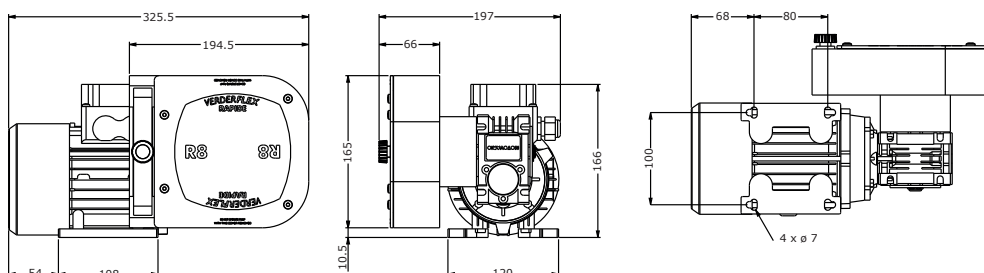
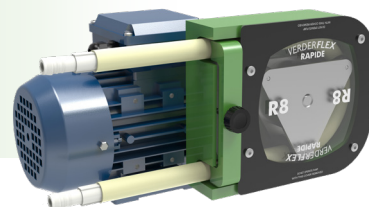
Nominal pump speed based on 50Hz operation

Flows are typical and were measured with water at 20°C with no suction lift or discharge pressure. Actual flows will vary according to suction conditions, discharge pressure, tube material and production tolerances.

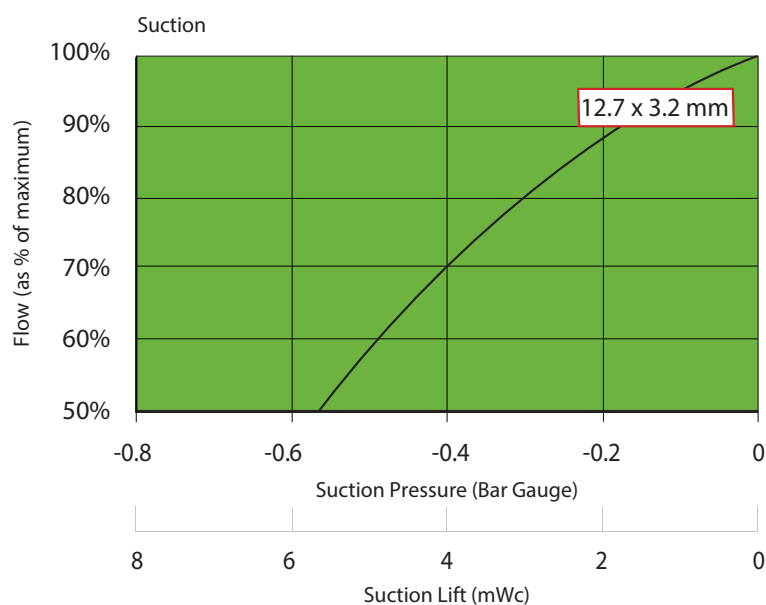
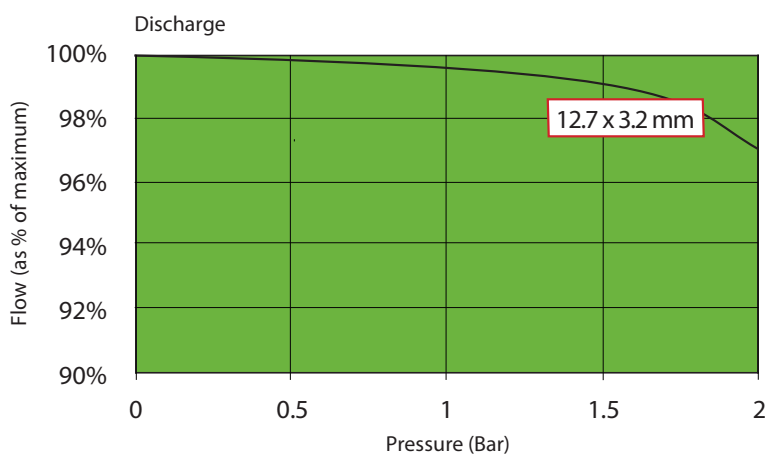


Verderflex

Rapide R8



All dimensions are in mm.
All dimensions and weights are for guidance only.



**Find your local supplier
at www.verderflex.com**

For construction installation and floor mounting drawings
please contact your local authorised Verderflex® distributor.

VERDER
passion for pumps